



VIRGIN ISLANDS WATER AND POWER AUTHORITY

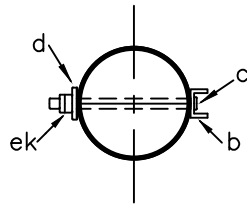
T&D

CONSTRUCTION STANDARDS

2020 EDITION (DRAFT)

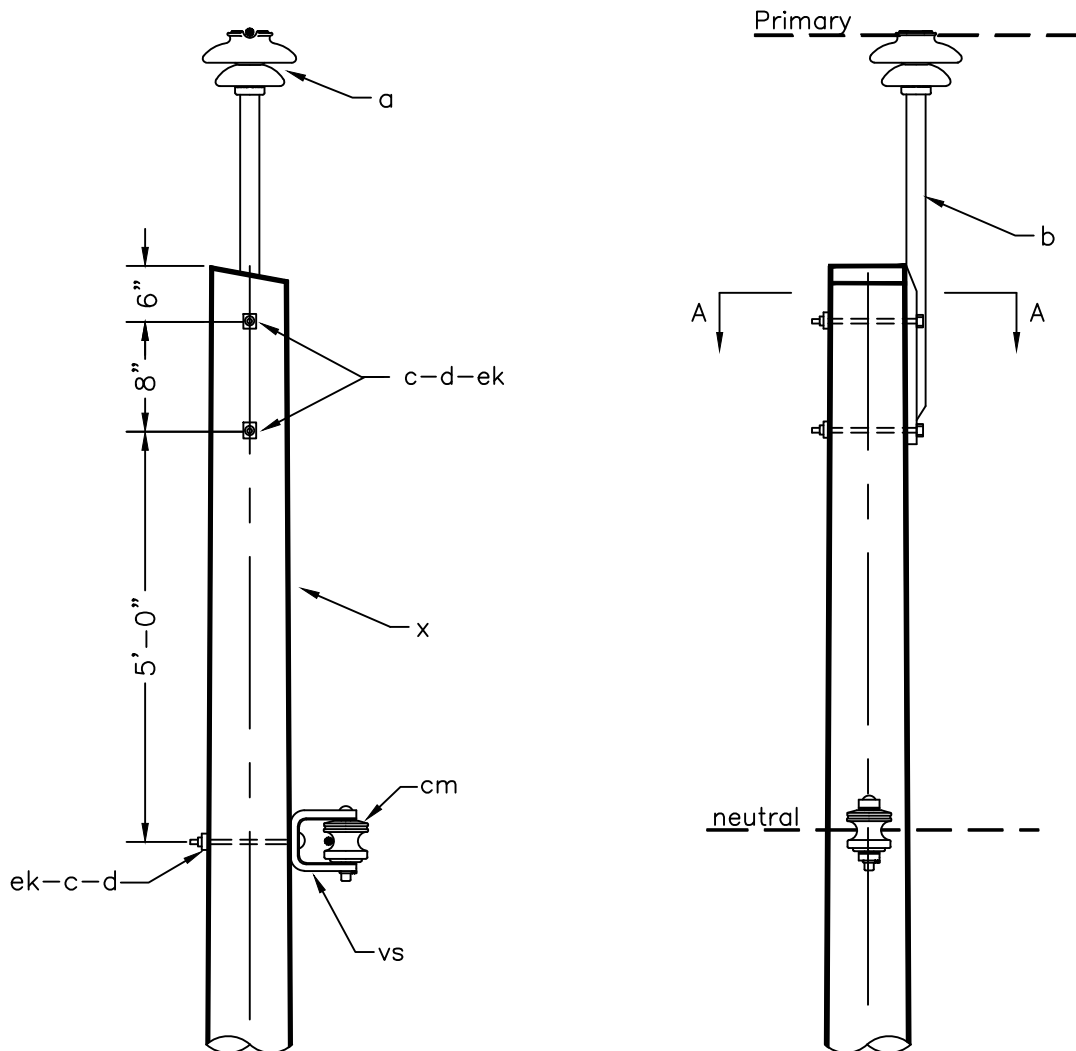


Drawn and Revised By: Design & Construction



SECTION A-A
POLE TOP PIN ASSEMBLY

REVISIONS	DATE
BY: XAVIER A. ACEVEDO	3-24-9
BY: XAVIER A. ACEVEDO	8-9-11



ITEM	NO.	MATERIAL
x	1	Roof Cut Pole, height as req'd
a	1	Insulator, pin type, 25KV
b	1	12" or 30" Fiberglass pole top, pin
c	3	Bolt, machine, 5/8" x req'd length
cm	1	Insulator, Porcelain Spool
d	3	Washer, square, 5/8"
vs	1	Clevis, insulated, 3 1/4" x 4"
ek	3	Lock nuts, as req'd

15KV & 25KV
1-PHASE SINGLE PRIMARY SUPPORT
0° TO 5° MAX. ANGLE

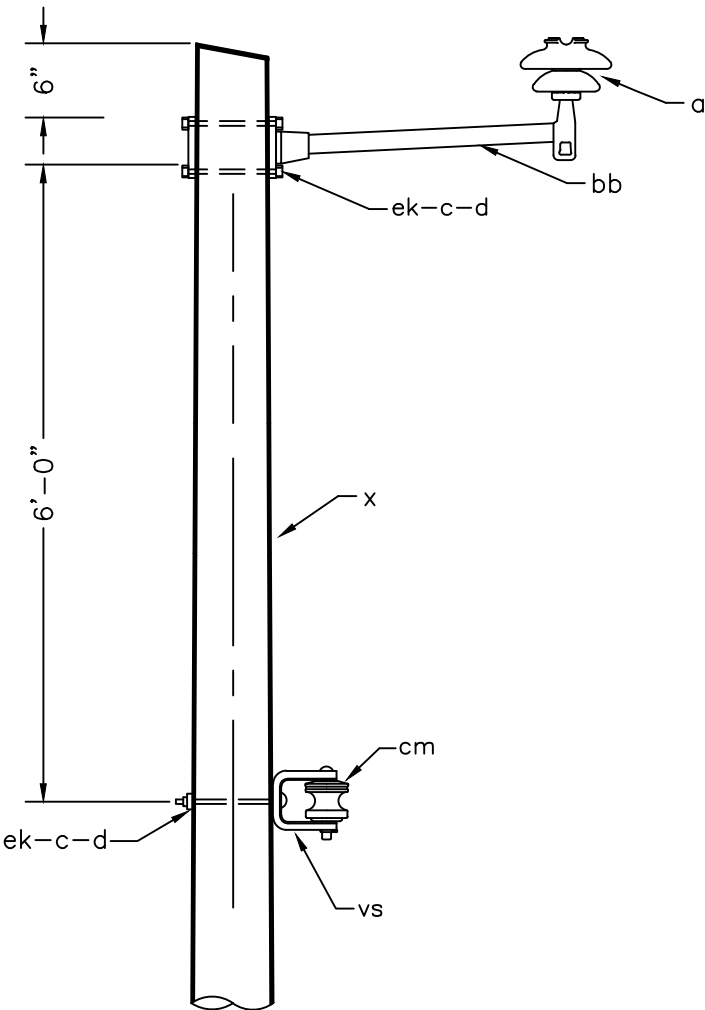
VIRGIN ISLANDS WATER AND POWER AUTHORITY
LINE DEPARTMENT

Dwg. Name:

Drawn By: C. Grant Date: June 1997
Approved By: M. SMITH Sheet: _____

A1-1

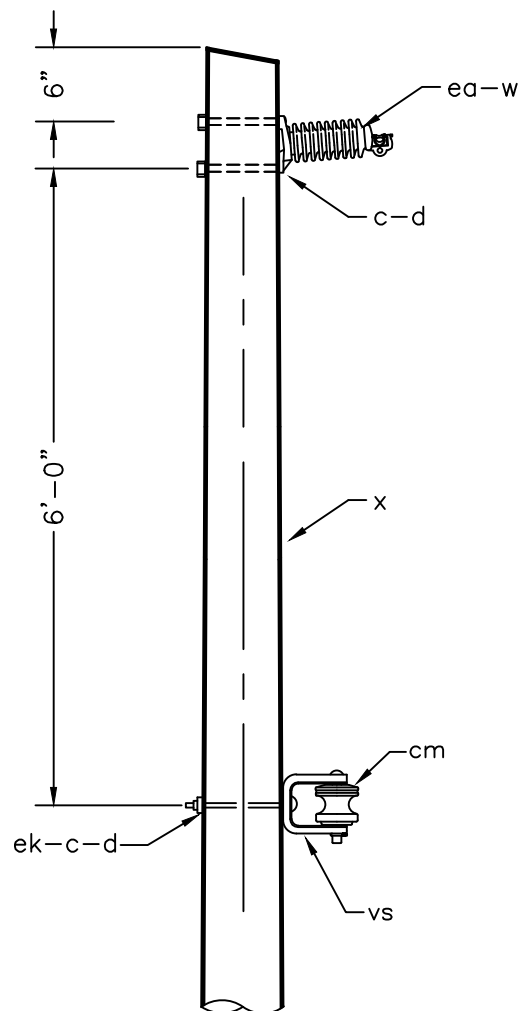
REVISIONS	DATE
BY: XAVIER A. ACEVEDO	3-24-9
BY: XAVIER A. ACEVEDO	8-9-11



ITEM	NO.	MATERIAL
x	1	Roof Cut Pole, height as req'd
vs	1	Clevis, insulated, 3 1/4" x 4"
c	3	Bolt, machine, 5/8" x req'd length
d	3	Washer, square, 5/8"
a	1	Insulator, pin type, 25KV
cm	1	Insulator, spool, porcelain
bb	2	16" or 24" Vertical fiberglass stand off, pin
ek	3	Locknuts, as req'd

15KV & 25KV 1-PHASE CONSTRUCTION USING STANDOFF PINS (0° TO 5°)	
VIRGIN ISLANDS WATER AND POWER AUTHORITY LINE DEPARTMENT	
Drawn By: <u>C. Grant</u> Date: <u>June 1997</u> Approved By: <u>M.SMITH</u> Sheet: _____	Dwg. Name: A1-2

REVISIONS	DATE
BY: XAVIER A. ACEVEDO	3-24-9
BY: XAVIER A. ACEVEDO	8-9-11



ITEM	NO.	MATERIAL
x	1	Roof Cut Pole, height as req'd
vs	1	Clevis, insulated, 3 1/4" x 4"
c	3	Bolt, machine, 5/8" x req'd length
d	3	Washer, square, 5/8"
w	1	Clamp, straight line
cm	1	Insulator, spool, porcelain
ea	1	Insulator, Lapp line post, 25KV
ek	3	Locknuts, as req'd

15KV & 25KV
1-PHASE CONSTRUCTION USING
LAPP LINE POSTS (0° to 5°)

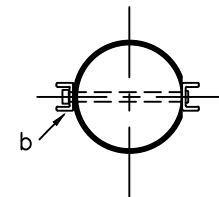
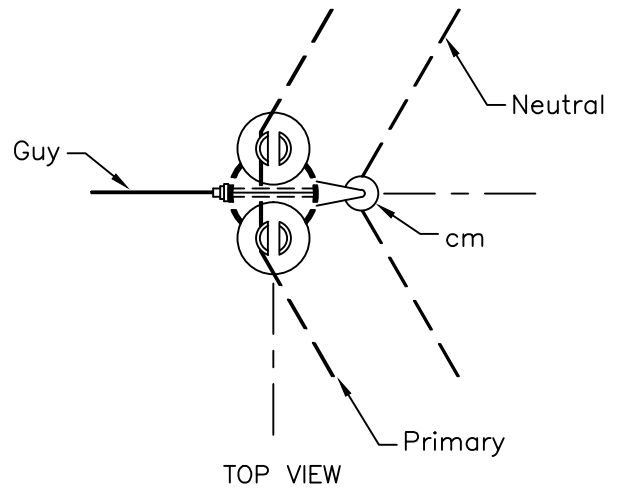
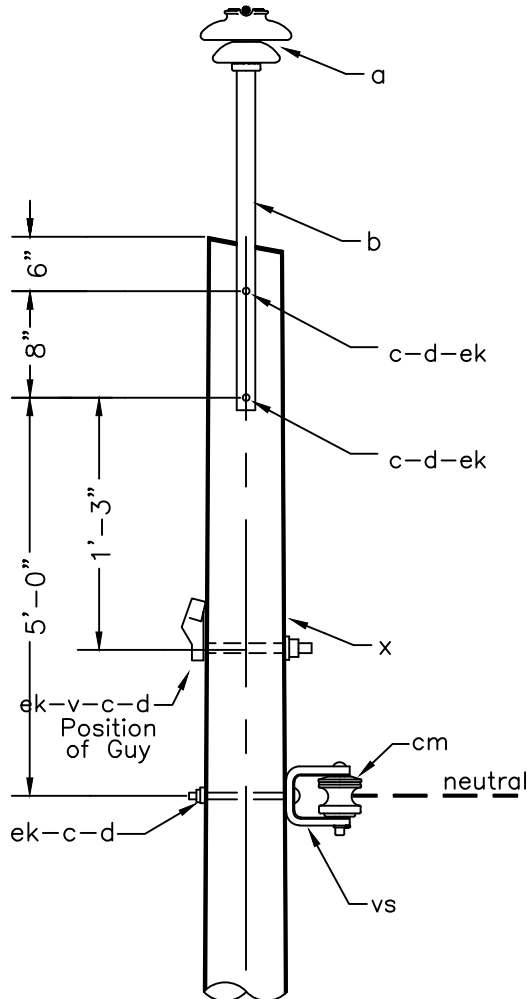
VIRGIN ISLANDS WATER AND POWER AUTHORITY
LINE DEPARTMENT

Dwg. Name:

Drawn By: C. Grant Date: June 1997
Approved By: M.SMITH Sheet: _____

A1-3

REVISIONS	DATE
BY: XAVIER A. ACEVEDO	3-24-9
BY: XAVIER A. ACEVEDO	8-9-11



POLE TOP PIN ASSEMBLY

NOTE:
FOR GUY ATTACHMENT DETAIL SEE "E1"

ITEM	NO.	MATERIAL
x	1	Roof Cut Pole, height as req'd
a	2	Insulator, pin type, 25KV
b	2	12" or 30" Fiberglass pole top, pin
c	4	Bolt, machine, 5/8" x req'd length
d	4	Washer, square, 5/8"
v	1	Guy attachment
cm	1	Insulator, Porcelain Spool
vs	1	Clevis, insulated, 3 1/4" x 4"
ek	4	Locknuts, as req'd

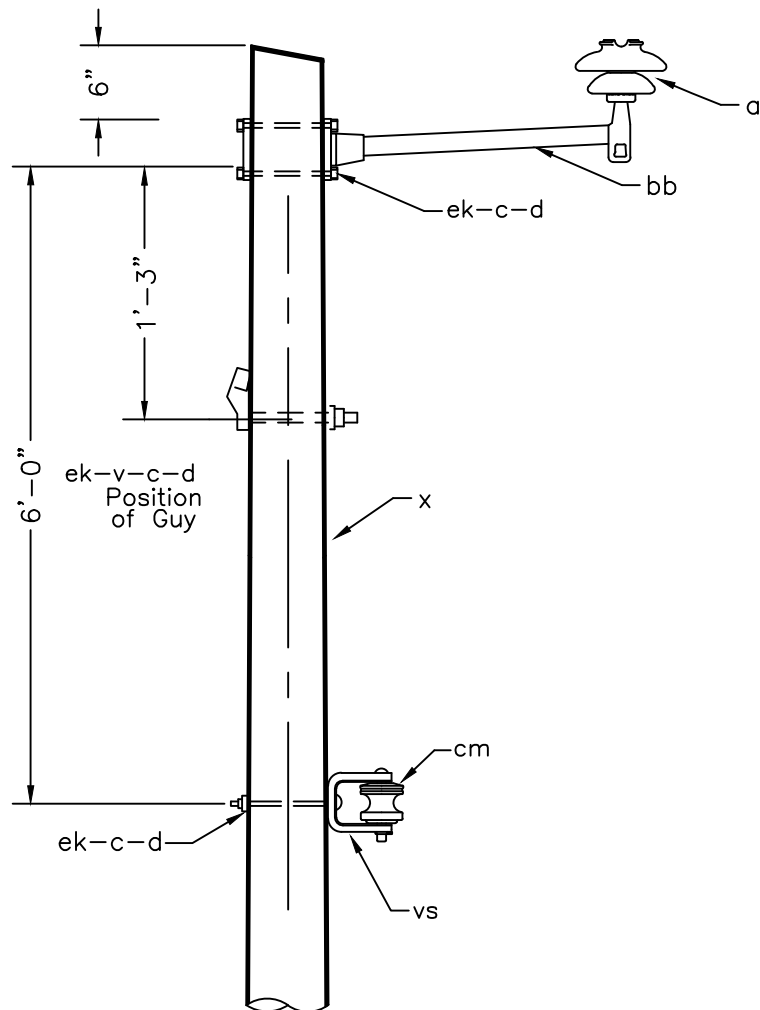
15KV & 25KV
1-PHASE DOUBLE PRIMARY SUPPORTS
5° TO 30° MAX. ANGLE

VIRGIN ISLANDS WATER AND POWER AUTHORITY
LINE DEPARTMENT

Drawn By: C. Grant Date: June 1997
Approved By: M. SMITH Sheet: _____

Dwg. Name:
A2-1

REVISIONS	DATE
BY: XAVIER A. ACEVEDO	3-24-9
BY: XAVIER A. ACEVEDO	8-9-11
BY: XAVIER A. ACEVEDO	2-23-16



NOTE:

FOR GUY ATTACHMENT DETAIL SEE "E1"

ITEM	NO.	MATERIAL
x	1	Roof Cut Pole, height as req'd
vs	1	Clevis, insulated, 3 1/4" x 4"
c	3	Bolt, machine, 5/8" x req'd length
d	3	Washer, square, 5/8"
a	1	Insulator, pin type, 25KV
cm	1	Insulator, spool, porcelain
bb	2	16" or 24" Vertical fiberglass stand off, pin
ek	3	Locknuts, as req'd
v	1	Guy attachment

15KV & 25KV
1-PHASE DOUBLE PRIMARY SUPPORTS
5° TO 30° MAX. ANGLE

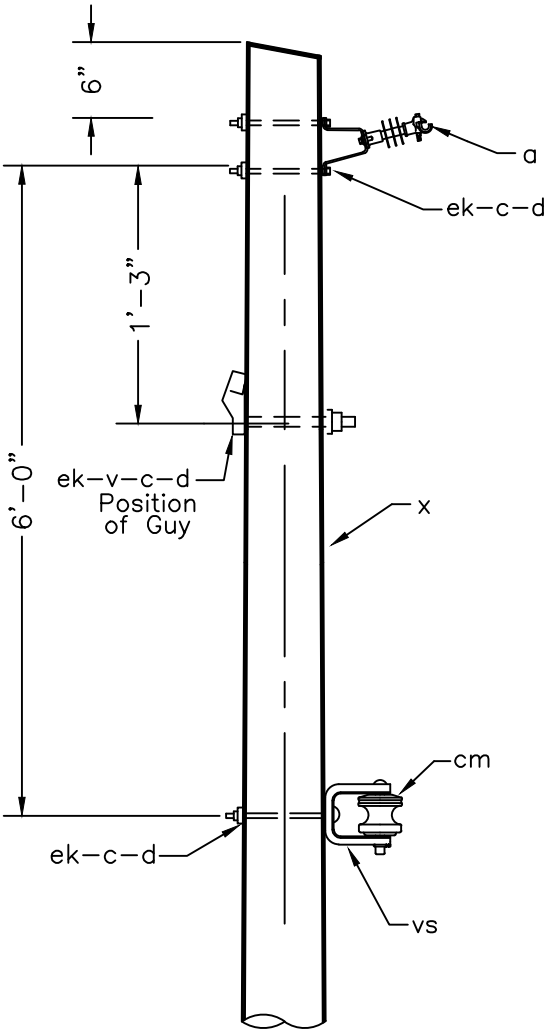
VIRGIN ISLANDS WATER AND POWER AUTHORITY
LINE DEPARTMENT

Drawn By: XAA Date: June 1997
Approved By: M.Holder Sheet: _____

Dwg. Name:

A2-2

REVISIONS	DATE
BY: XAVIER A. ACEVEDO	3-24-9
BY: XAVIER A. ACEVEDO	8-9-11
BY: XAVIER A. ACEVEDO	11-21-17

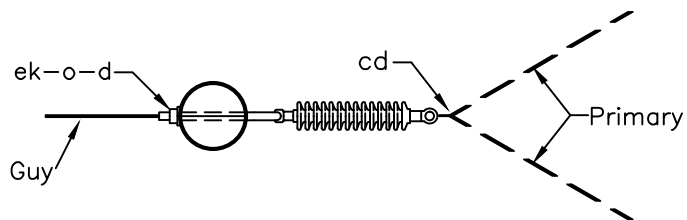
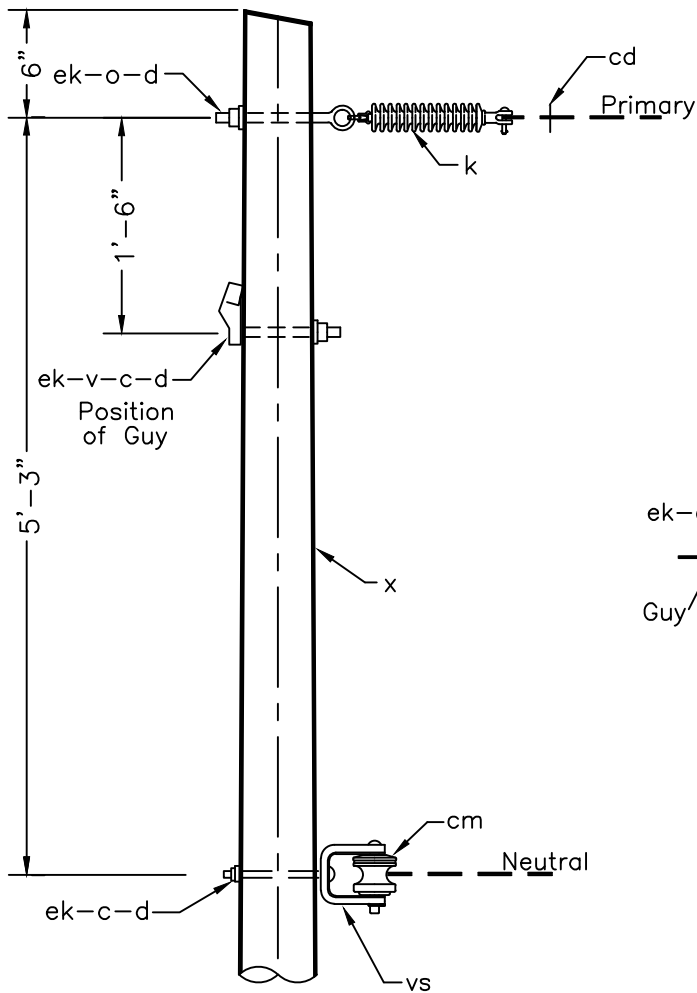


NOTE:
 FOR GUY ATTACHMENT DETAIL SEE "E1"

ITEM	NO.	MATERIAL
x	1	Roof Cut Pole, height as req'd
vs	1	Clevis, insulated, 3 1/4" x 4"
c	3	Bolt, machine, 1" x req'd length
d	3	Curve Washer, 1"
a	1	K-Clamp with 9" Bracket
cm	1	Insulator, spool, porcelain
ek	3	Locknuts, as req'd
v	1	Guy attachment

15KV & 25KV 1-PHASE DOUBLE PRIMARY SUPPORTS 5° TO 30° MAX. ANGLE	
VIRGIN ISLANDS WATER AND POWER AUTHORITY LINE DEPARTMENT	
Drawn By: XAA Approved By: M.Holder	Date: June 1997 Sheet: _____
Dwg. Name: A2-3	

REVISIONS	DATE
BY: XAVIER A. ACEVEDO	3-24-9
BY: XAVIER A. ACEVEDO	8-9-11



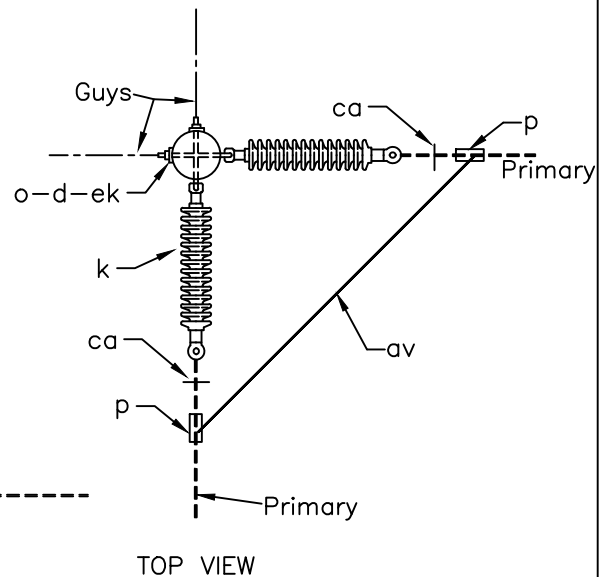
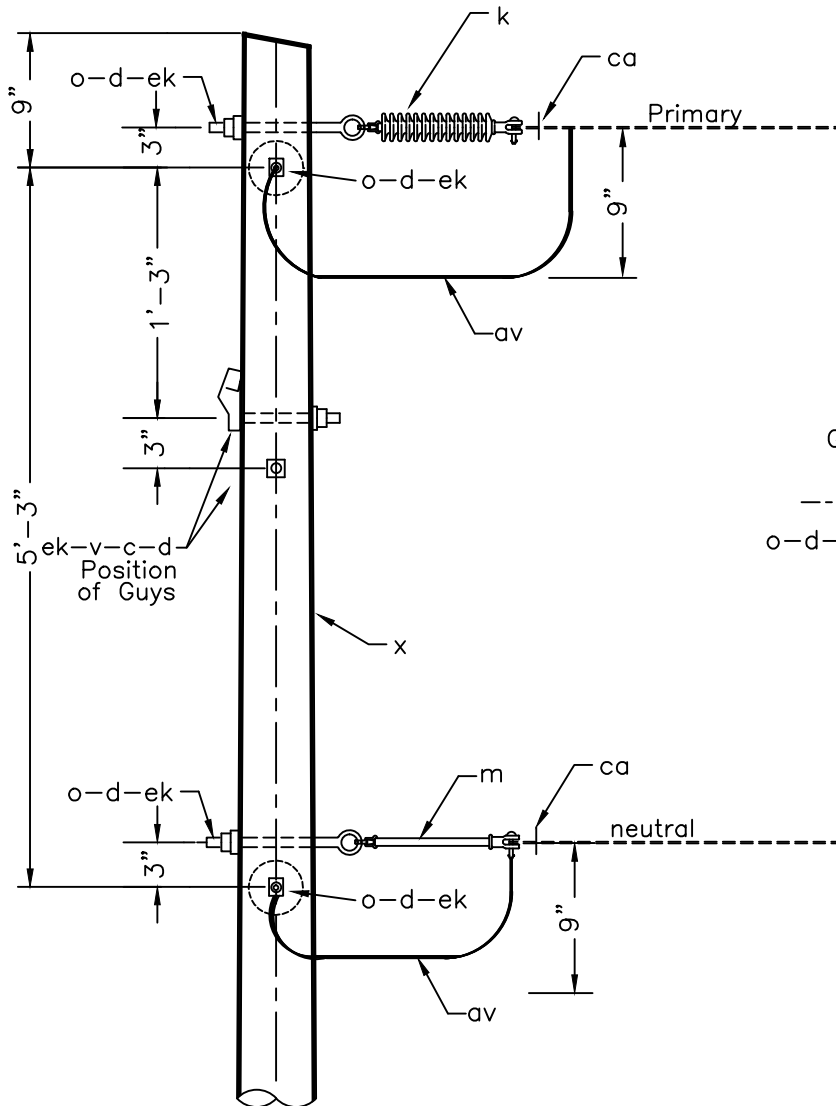
TOP VIEW

NOTE:
FOR GUY ATTACHMENT DETAIL SEE "E1"

ITEM NO.	MATERIAL
cm	1 Insulator, Porcelain Spool
x	1 Roof Cut Pole, height as req'd
c	2 Bolt, machine, 5/8" x req'd length
d	3 Washer, square, 5/8"
k	1 Insulator, Epoxilator Susp., 25KV
o	1 Bolt, Oval eye, 5/8" x req'd length
v	1 Guy attachment
cd	1 Angle assembly, primary
vs	1 Clevis, insulated, 3 1/4" x 4"
ek	3 Locknuts, as req'd

15KV & 25KV 1-PHASE VERTICAL CONSTRUCTION 30° TO 60° MAX. ANGLE	
VIRGIN ISLANDS WATER AND POWER AUTHORITY LINE DEPARTMENT	
Drawn By: C. Grant Approved By: M. SMITH	Date: June 1997 Sheet: _____
Dwg. Name: A3	

REVISIONS	DATE
BY: XAVIER A. ACEVEDO	3-24-9
BY: XAVIER A. ACEVEDO	8-9-11



ITEM	NO.	MATERIAL
x	1	Roof Cut Pole, height as req'd
c	2	Bolt, machine, 5/8" x req'd length
d	6	Washer, square, 5/8"
k	2	Insulator, Epoxilator Susp., 25KV
p	2	Connectors, as req'd
v	2	Guy attachment
ca	4	Dead-end shoe, manual
m	2	12" Fiberglass rod
ek	6	Locknuts, as req'd
o	4	Bolt, Oval eye, 5/8" x req'd length
av	2	Jumpers, as req'd

NOTE:
FOR GUY ATTACHMENT DETAIL SEE "E1"

15KV & 25KV
1-PHASE VERTICAL CONSTRUCTION
60° TO 90° MAX. ANGLE

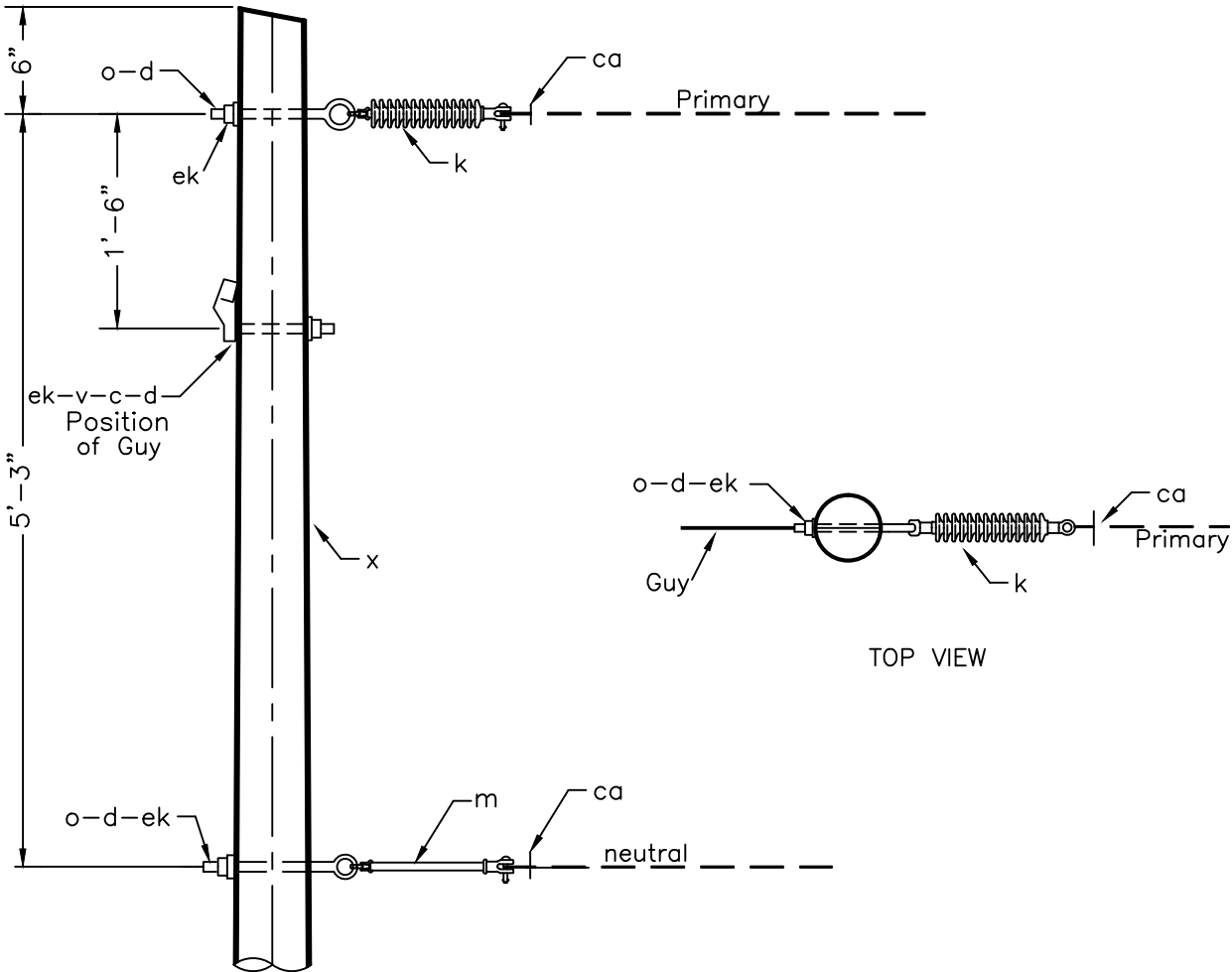
VIRGIN ISLANDS WATER AND POWER AUTHORITY
LINE DEPARTMENT

Drawn By: C. Grant Date: June 1997
Approved By: M. SMITH Sheet: _____

Dwg. Name:

A4

REVISIONS	DATE
BY: XAVIER A. ACEVEDO	3-24-9
BY: XAVIER A. ACEVEDO	8-9-11

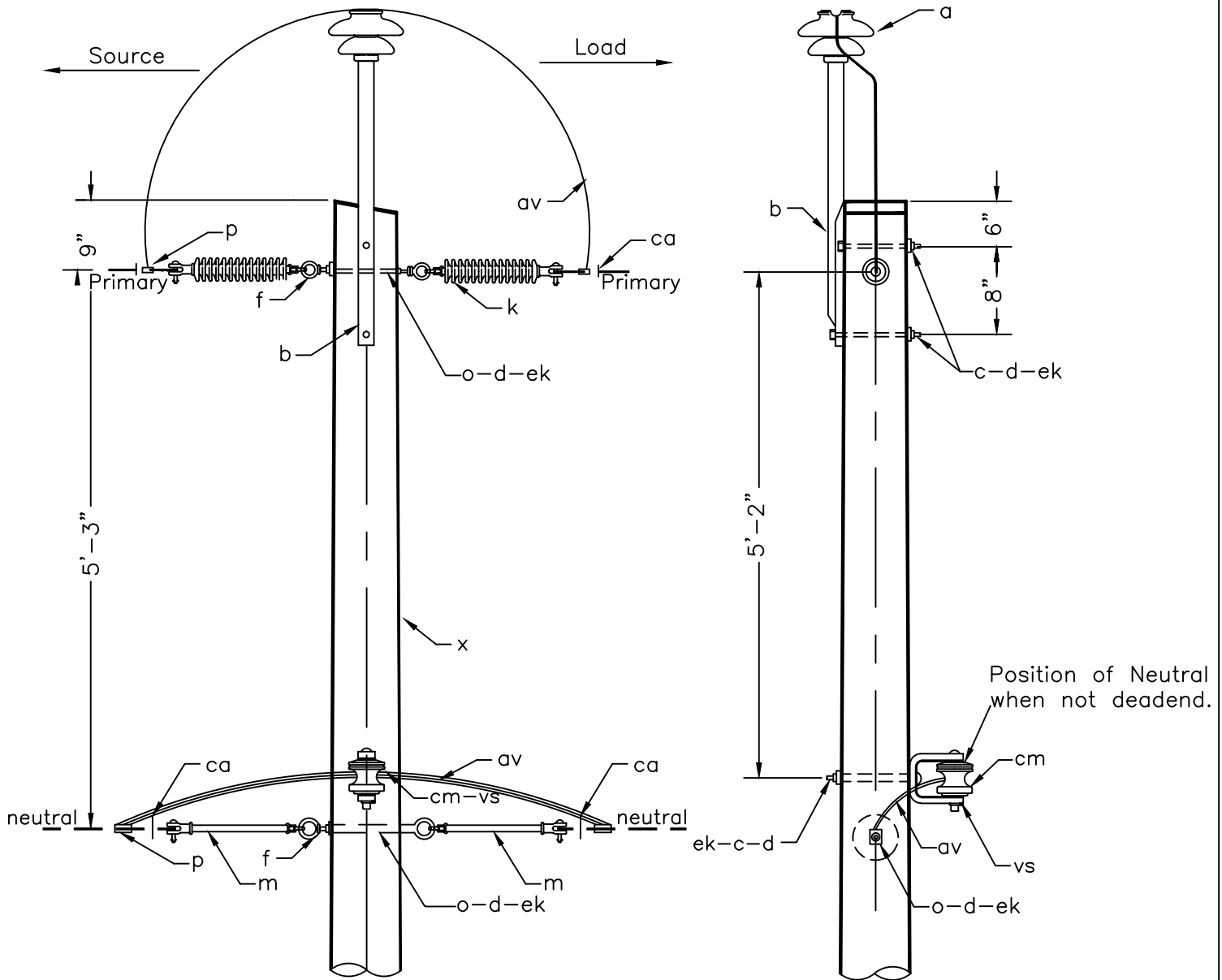


NOTE:
FOR GUY ATTACHMENT DETAIL SEE "E1"

ITEM	NO.	MATERIAL
m	1	12" Fiberglass rod
x	1	Roof cut Pole, height as req'd
c	1	Bolt, machine, 5/8" x req'd length
d	3	Washer, square, 5/8"
k	1	Insulator, Epoxilator Susp., 25KV
o	2	Bolt, Oval eye, 5/8" x req'd length
v	1	Guy attachment
ca	2	Dead-end shoe, manual
ek	3	Locknuts, as req'd

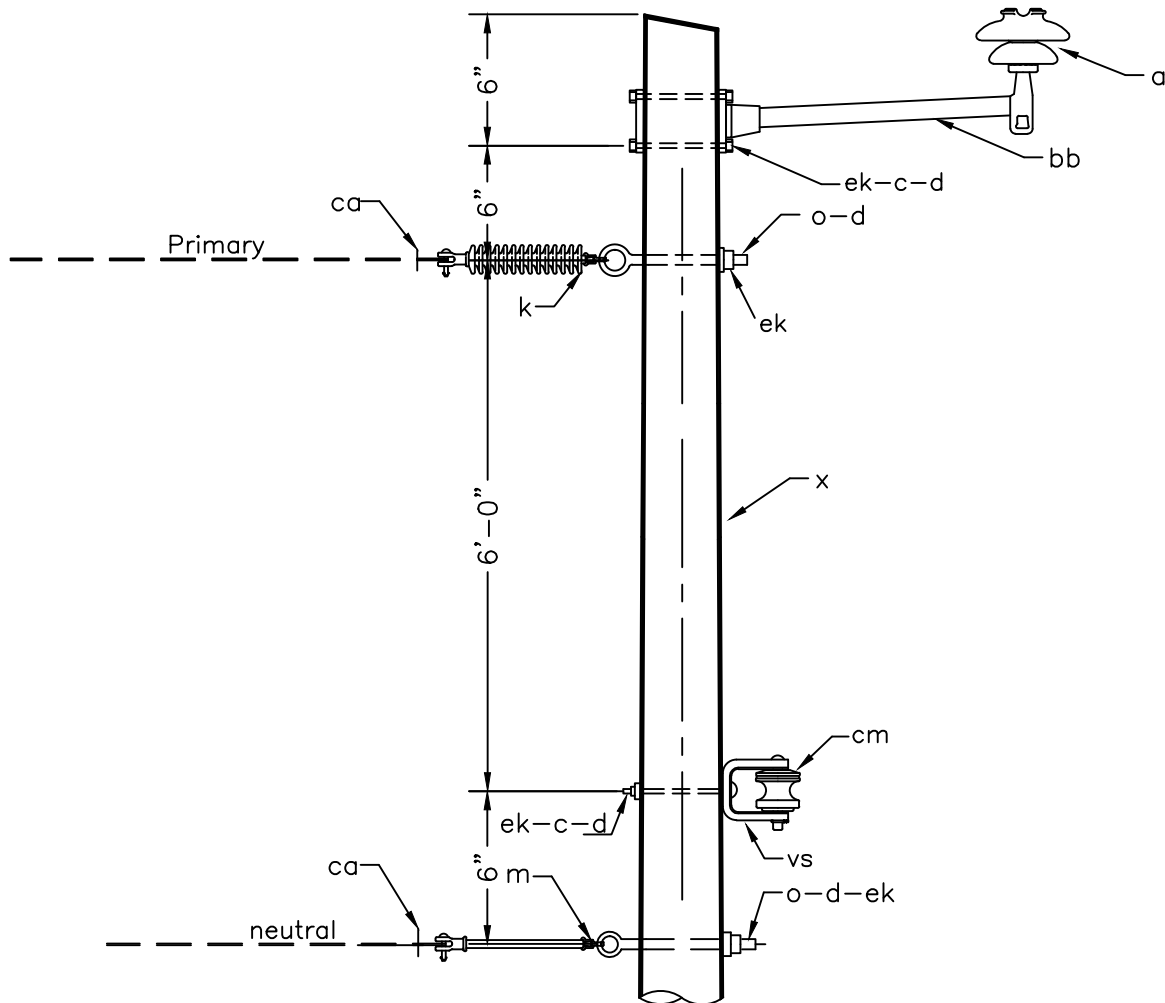
<p>15KV & 25KV 1-PHASE VERTICAL CONSTRUCTION SINGLE DEADEND</p>	
<p>VIRGIN ISLANDS WATER AND POWER AUTHORITY LINE DEPARTMENT</p>	
<p>Drawn By: C. Grant Date: June 1997 Approved By: M.SMITH Sheet: _____</p>	<p>Dwg. Name: A5</p>

REVISIONS	DATE
BY: XAVIER A. ACEVEDO	3-24-9
BY: XAVIER A. ACEVEDO	8-9-11



ITEM	NO.	MATERIAL	ITEM	NO.	MATERIAL
x	1	Roof Cut Pole, height as req'd	ek	7	Locknuts, as req'd
a	1	Insulator, pin type, 25KV	f	2	Oval eye nut
b	1	12" or 30" Fiberglass pole top, pin			
c	3	Bolt, machine, 5/8" x req'd			
d	7	Washer, square, 5/8"	15KV & 25KV 1-PHASE VERTICAL CONSTRUCTION DOUBLE DEADEND		
k	2	Insulator, Epoxilator Susp., 25KV			
o	2	Bolt, eye, 5/8"x req'd. length			
p	4	Connectors, as req'd			
vs	1	Clevis, insulated, 3 1/4" x 4"	VIRGIN ISLANDS WATER AND POWER AUTHORITY LINE DEPARTMENT		
av	2	Jumpers, as req'd			
ca	4	Dead-end shoe, manual	Dwg. Name:		
cm	1	Insulator, Porcelain Spool			
m	2	12" Fiberglass rod	Drawn By: <u>C. Grant</u> Date: <u>June 1997</u> Approved By: <u>M.SMITH</u> Sheet: _____	A6	

REVISIONS	DATE
BY: XAVIER A. ACEVEDO	3-24-9
BY: XAVIER A. ACEVEDO	8-9-11
BY: XAVIER A. ACEVEDO	5-9-16



ITEM	NO.	MATERIAL
x	1	Roof Cut Pole, height as req'd
vs	1	Clevis, insulated, 3 1/4" x 4"
c	4	Bolt, machine, 5/8" x req'd length
d	6	Washer, square, 5/8"
a	1	Insulator, pin type, 25KV
cm	1	Insulator, spool, porcelain
bb	2	16" or 24" Vertical fiberglass stand off, pin
ek	6	Locknuts, as req'd
m	1	12" Fiberglass rod
k	1	Insulator, Epoxilator Susp., 25KV
o	2	Bolt, Oval eye, 5/8" x req'd length
ca	2	Dead-end shoe, manual

15KV & 25KV
1-PHASE TAKE OFF CONSTRUCTION

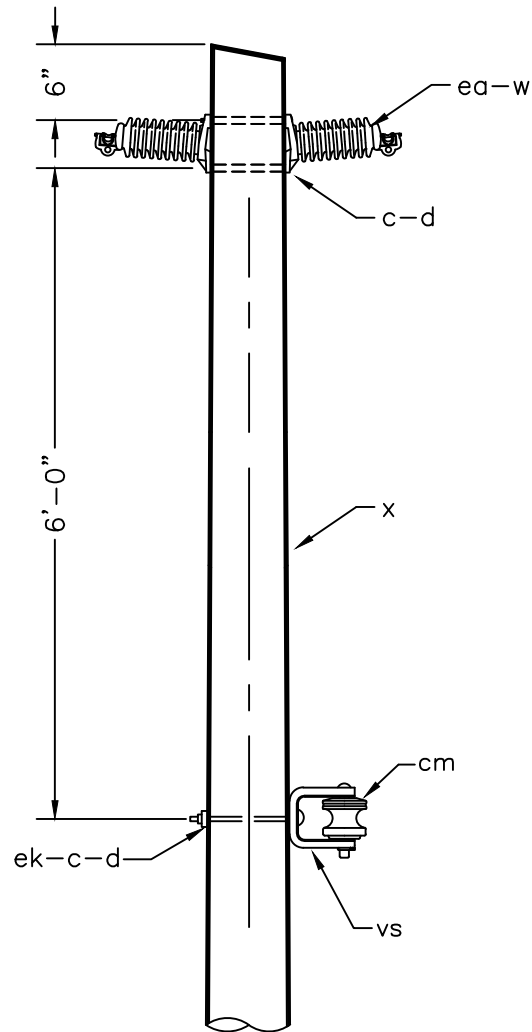
VIRGIN ISLANDS WATER AND POWER AUTHORITY
LINE DEPARTMENT

Dwg. Name:

Drawn By: C. Grant Date: June 1997
Approved By: M.SMITH Sheet: _____

A7

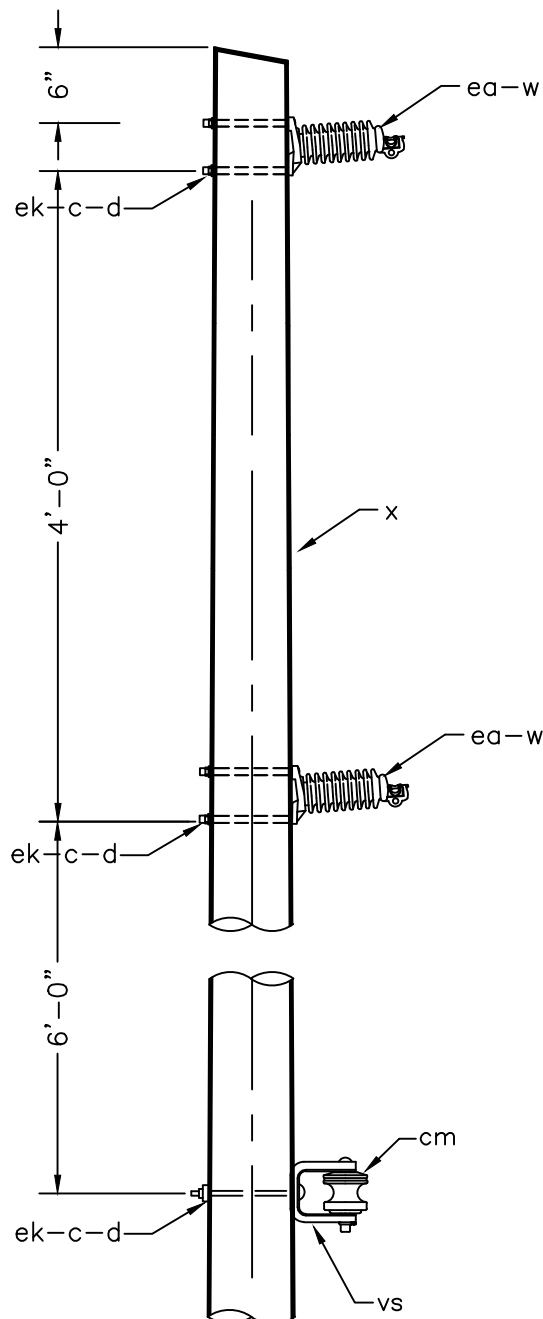
REVISIONS	DATE
BY: XAVIER A. ACEVEDO	3-24-9
BY: XAVIER A. ACEVEDO	8-9-11



ITEM	NO.	MATERIAL
x	1	Roof Cut Pole, height as req'd
vs	1	Clevis, insulated, 3 1/4" x 4"
c	3	Bolt, machine, 5/8" x req'd length
d	3	Washer, square, 5/8"
w	2	Clamp, straight line
cm	1	Insulator, spool, porcelain
ea	2	Insulator, Lapp line post, 25KV
ek	3	Locknuts, as req'd

<p>15KV & 25KV 2-PHASE CONSTRUCTION USING LAPP LINE POSTS (0° to 5°)</p>	
<p>VIRGIN ISLANDS WATER AND POWER AUTHORITY LINE DEPARTMENT</p>	
<p>Drawn By: C. Grant Approved By: M.SMITH</p>	<p>Date: June 1997 Sheet: _____</p>
<p>Dwg. Name: B1-1</p>	

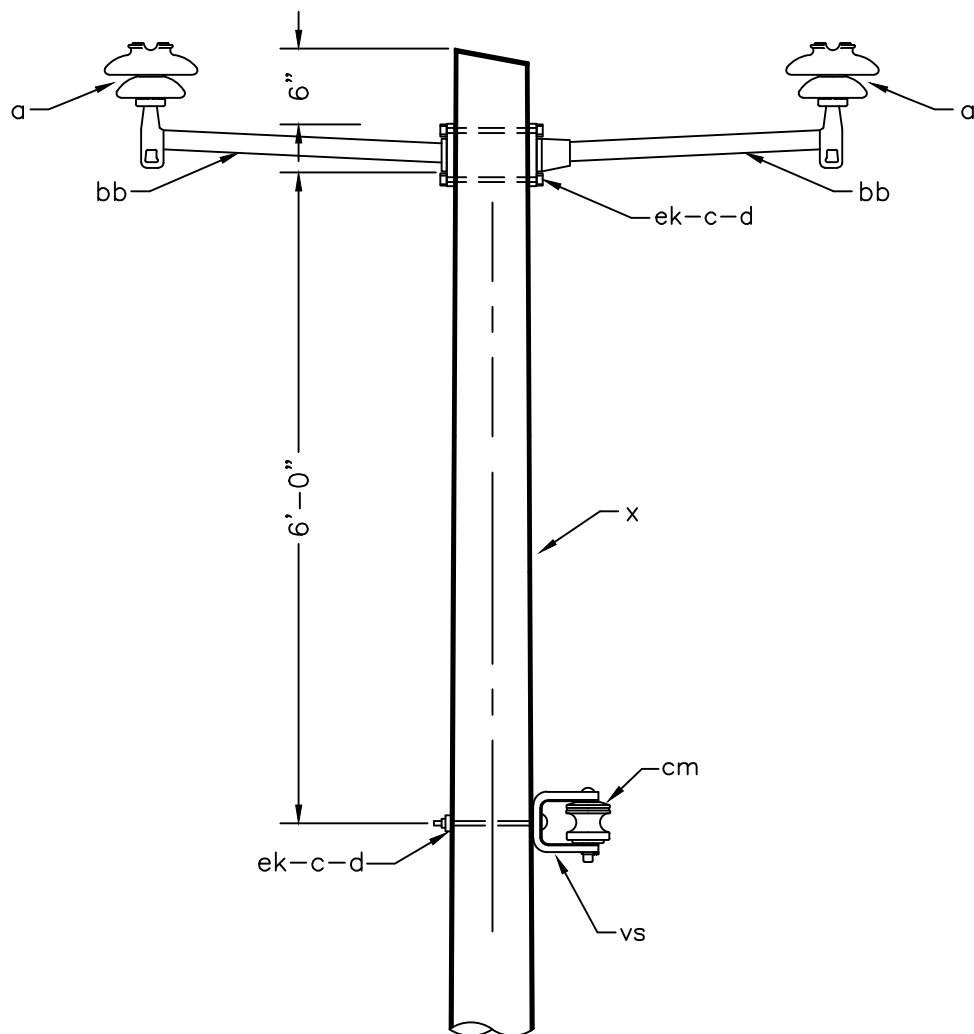
REVISIONS	DATE
BY: XAVIER A. ACEVEDO	3-24-9
BY: XAVIER A. ACEVEDO	8-9-11



ITEM	NO.	MATERIAL
x	1	Roof Cut Pole, height as req'd
vs	1	Clevis, insulated, 3 1/4" x 4"
c	3	Bolt, machine, 5/8" x req'd length
d	5	Washer, square, 5/8"
w	2	Clamp, straight line
cm	1	Insulator, spool, porcelain
ea	2	Insulator, Lapp line post, 25KV
ek	5	Locknuts, as req'd

15KV & 25KV 2-PHASE CONSTRUCTION USING LAPP LINE POSTS (0° to 5°)	
VIRGIN ISLANDS WATER AND POWER AUTHORITY LINE DEPARTMENT	
Drawn By: C. Grant Approved By: M.SMITH	Date: June 1997 Sheet: _____
Dwg. Name:	B1-2

REVISIONS	DATE
BY: XAVIER A. ACEVEDO	3-24-9
BY: XAVIER A. ACEVEDO	8-9-11



ITEM	NO.	MATERIAL
x	1	Roof Cut Pole, height as req'd
vs	1	Clevis, insulated, 3 1/4" x 4"
c	3	Bolt, machine, 5/8" x req'd length
d	3	Washer, square, 5/8"
a	2	Insulator, pin type, 25KV
cm	1	Insulator, spool, porcelain
bb	2	16" or 24" Vertical fiberglass stand off, pin
ek	3	Locknuts, as req'd

15KV & 25KV
2-PHASE CONSTRUCTION USING
STANDOFF PINS (0° TO 5°)

VIRGIN ISLANDS WATER AND POWER AUTHORITY

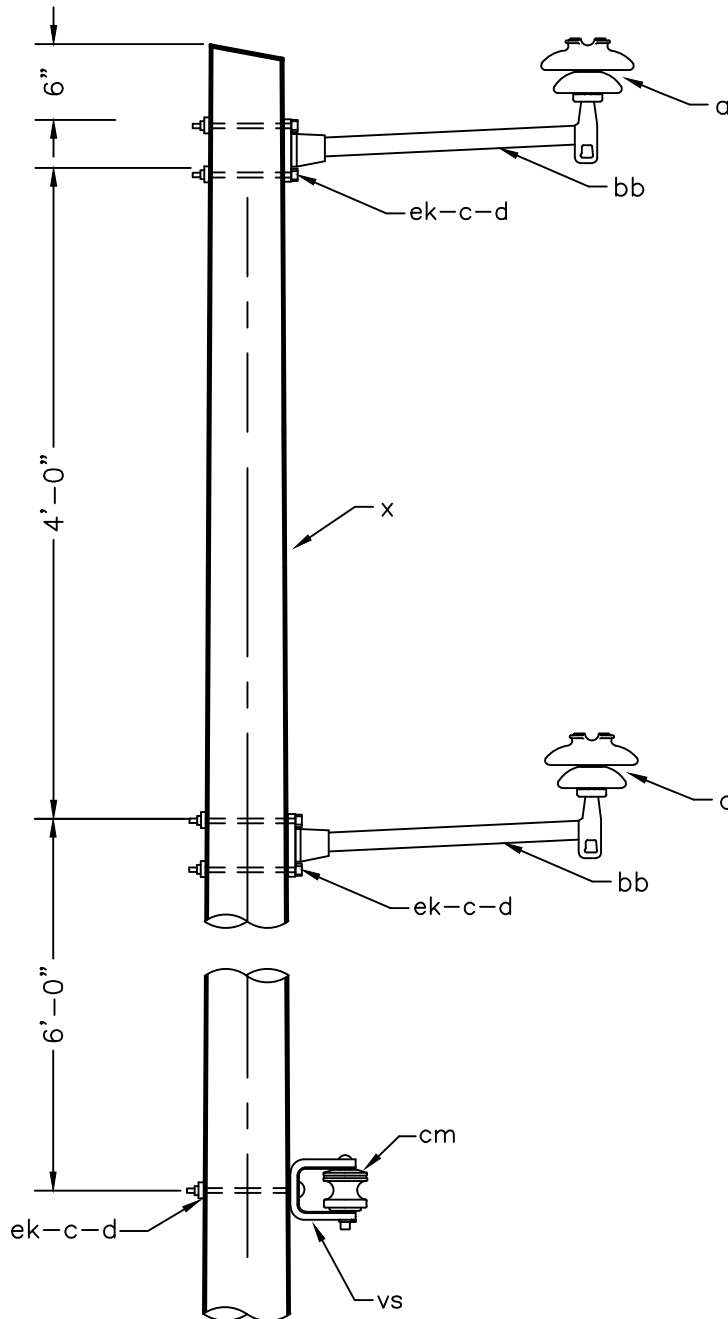
LINE DEPARTMENT

Dwg. Name:

Drawn By: C. Grant Date: June 1997
Approved By: M. SMITH Sheet: _____

B1-3

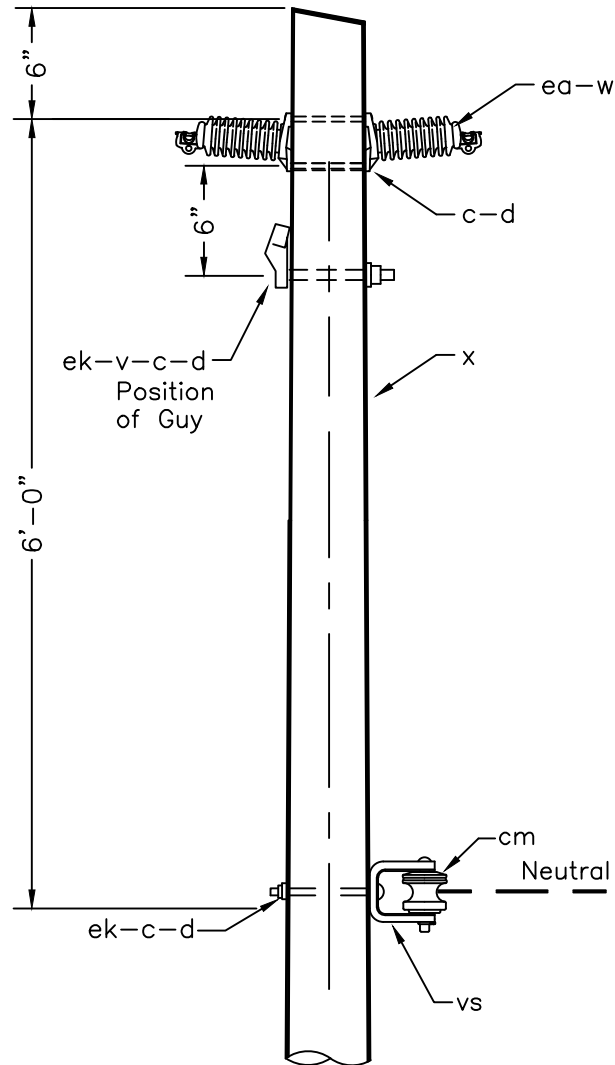
REVISIONS	DATE
BY: XAVIER A. ACEVEDO	3-24-9
BY: XAVIER A. ACEVEDO	8-9-11



ITEM	NO.	MATERIAL
x	1	Roof Cut Pole, height as req'd
vs	1	Clevis, insulated, 3 1/4" x 4"
c	5	Bolt, machine, 5/8" x req'd length
d	5	Washer, square, 5/8"
a	2	Insulator, pin type, 25KV
cm	1	Insulator, spool, porcelain
bb	2	16" or 24" Vertical fiberglass stand off, pin
ek	5	Locknuts, as req'd

15KV & 25KV 2-PHASE CONSTRUCTION USING STANDOFF PINS (0° TO 5°)	
VIRGIN ISLANDS WATER AND POWER AUTHORITY	
LINE DEPARTMENT	
Drawn By: <u>C. Grant</u>	Date: <u>June 1997</u>
Approved By: <u>M. SMITH</u>	Sheet: <u> </u>
Dwg. Name: <u>B1-4</u>	

REVISIONS	DATE
BY: XAVIER A. ACEVEDO	3-24-9
BY: XAVIER A. ACEVEDO	8-9-11

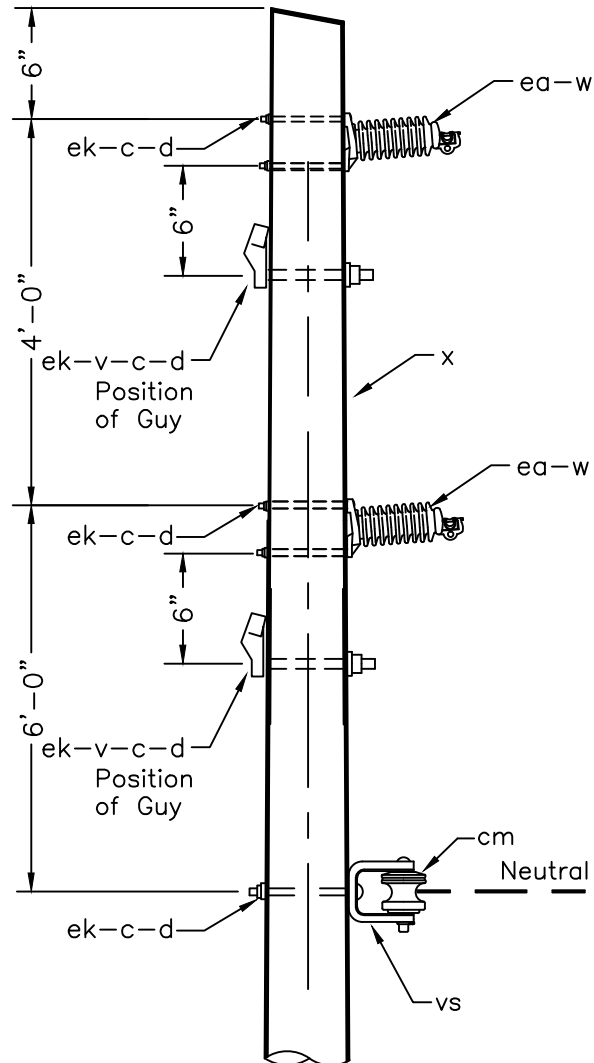


NOTE:
FOR GUY ATTACHMENT DETAIL SEE "E1"

ITEM	NO.	MATERIAL
x	1	Roof Cut Pole, height as req'd
vs	1	Clevis, insulated, 3 1/4" x 4"
c	4	Bolt, machine, 5/8" x req'd length
d	4	Washer, square, 5/8"
w	2	Clamp, straight line
cm	1	Insulator, spool, porcelain
ea	2	Insulator, Lapp line post, 25KV
ek	4	Locknuts, as req'd
v	1	Guy Attachment

<p align="center">15KV & 25KV 2-PHASE CONSTRUCTION USING LAPP LINE POSTS (5° to 30°)</p>	
<p align="center">VIRGIN ISLANDS WATER AND POWER AUTHORITY LINE DEPARTMENT</p>	
<p>Drawn By: <u>C. Grant</u> Approved By: <u>M.SMITH</u></p>	<p>Date: <u>June 1997</u> Sheet: _____</p>
<p align="right">Dwg. Name: B2-1</p>	

REVISIONS	DATE
BY: XAVIER A. ACEVEDO	3-24-9
BY: XAVIER A. ACEVEDO	8-9-11



NOTE:
FOR GUY ATTACHMENT DETAIL SEE "E3"

ITEM	NO.	MATERIAL
x	1	Roof Cut Pole, height as req'd
vs	1	Clevis, insulated, 3 1/4" x 4"
c	7	Bolt, machine, 5/8" x req'd length
d	7	Washer, square, 5/8"
w	2	Clamp, straight line
cm	1	Insulator, spool, porcelain
ea	2	Insulator, Lapp line post, 25KV
ek	7	Locknuts, as req'd
v	2	Guy Attachment

15KV & 25KV
2-PHASE CONSTRUCTION USING
LAPP LINE POSTS (5° to 30°)

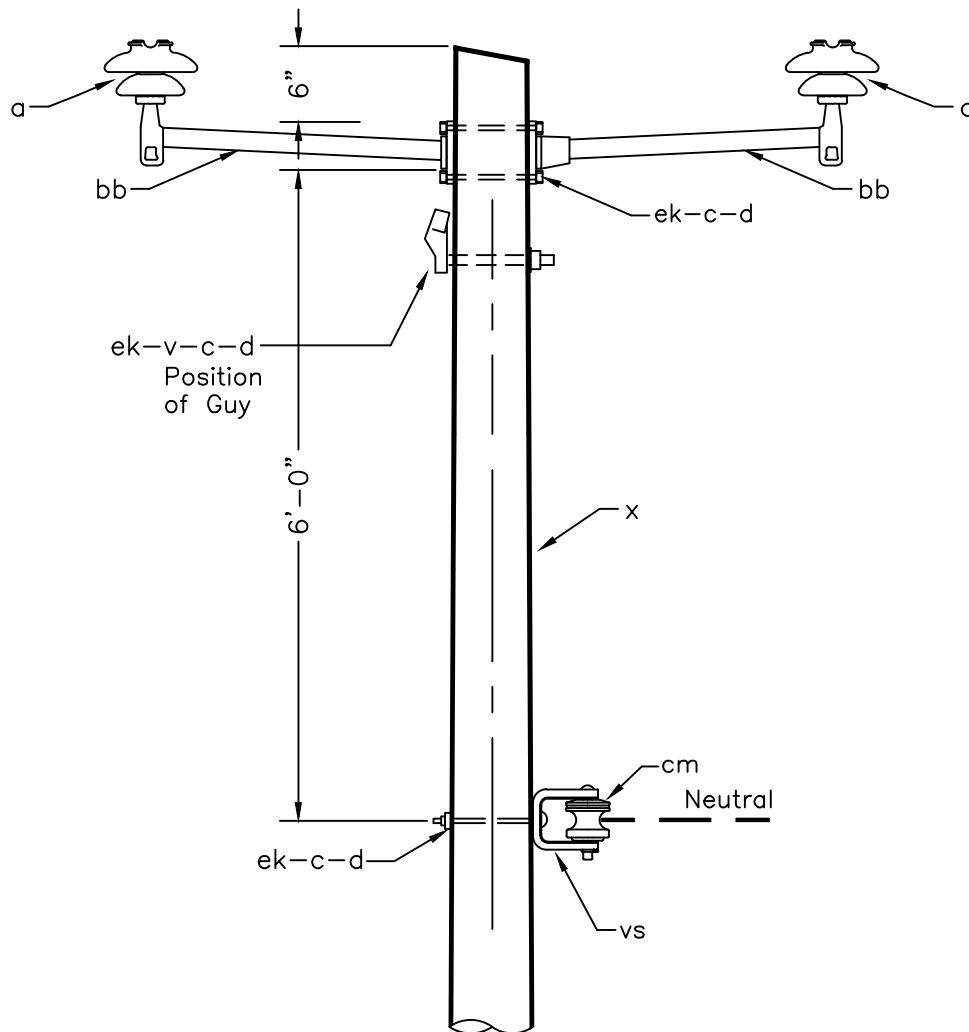
VIRGIN ISLANDS WATER AND POWER AUTHORITY
LINE DEPARTMENT

Dwg. Name:

Drawn By: C. Grant Date: June 1997
Approved By: M.SMITH Sheet: _____

B2-2

REVISIONS	DATE
BY: XAVIER A. ACEVEDO	3-24-9
BY: XAVIER A. ACEVEDO	8-9-11



NOTE:
FOR GUY ATTACHMENT DETAIL SEE "E1"

ITEM	NO.	MATERIAL
x	1	Roof Cut Pole, height as req'd
vs	1	Clevis, insulated, 3 1/4" x 4"
c	4	Bolt, machine, 5/8" x req'd length
d	4	Washer, square, 5/8"
a	2	Insulator, pin type, 25KV
cm	1	Insulator, spool, porcelain
bb	2	16" or 24" Vertical fiberglass stand off, pin
ek	4	Locknuts, as req'd
v	1	Guy Attachment

15KV & 25KV
2-PHASE CONSTRUCTION USING
STANDOFF PINS (5° TO 30°)

VIRGIN ISLANDS WATER AND POWER AUTHORITY

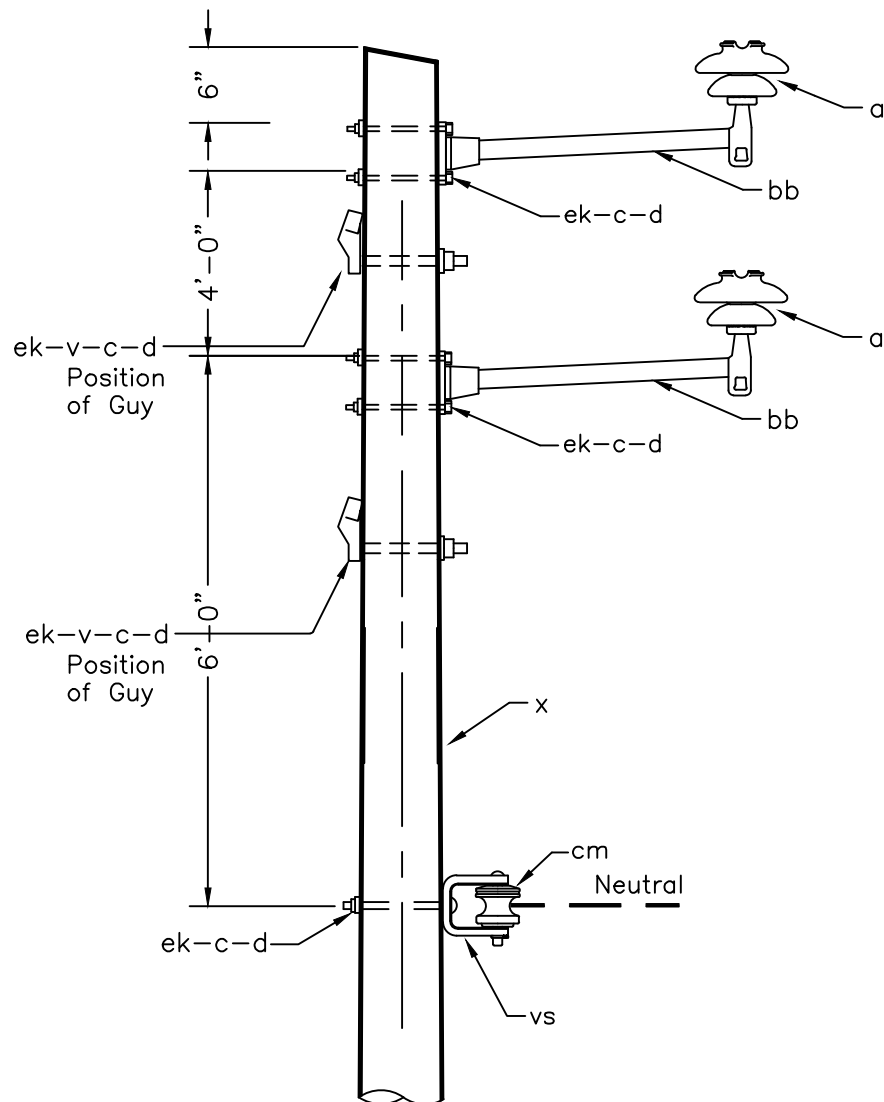
LINE DEPARTMENT

Dwg. Name:

Drawn By: C. Grant Date: June 1997
Approved By: M.SMITH Sheet: _____

B2-3

REVISIONS	DATE
BY: XAVIER A. ACEVEDO	3-24-9
BY: XAVIER A. ACEVEDO	8-9-11



NOTE:
FOR GUY ATTACHMENT DETAIL SEE "E3"

ITEM	NO.	MATERIAL
x	1	Roof Cut Pole, height as req'd
vs	1	Clevis, insulated, 3 1/4" x 4"
c	7	Bolt, machine, 5/8" x req'd length
d	7	Washer, square, 5/8"
a	2	Insulator, pin type, 25KV
cm	1	Insulator, spool, porcelain
bb	2	16" or 24" Vertical fiberglass stand off, pin
ek	7	Locknuts, as req'd
v	2	Guy Attachment

15KV & 25KV
2-PHASE CONSTRUCTION USING
STANDOFF PINS (5° TO 30°)

VIRGIN ISLANDS WATER AND POWER AUTHORITY

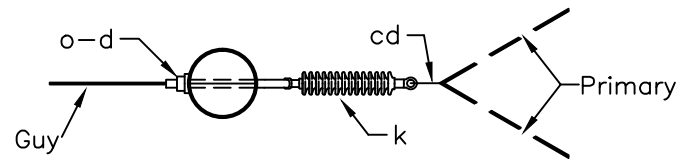
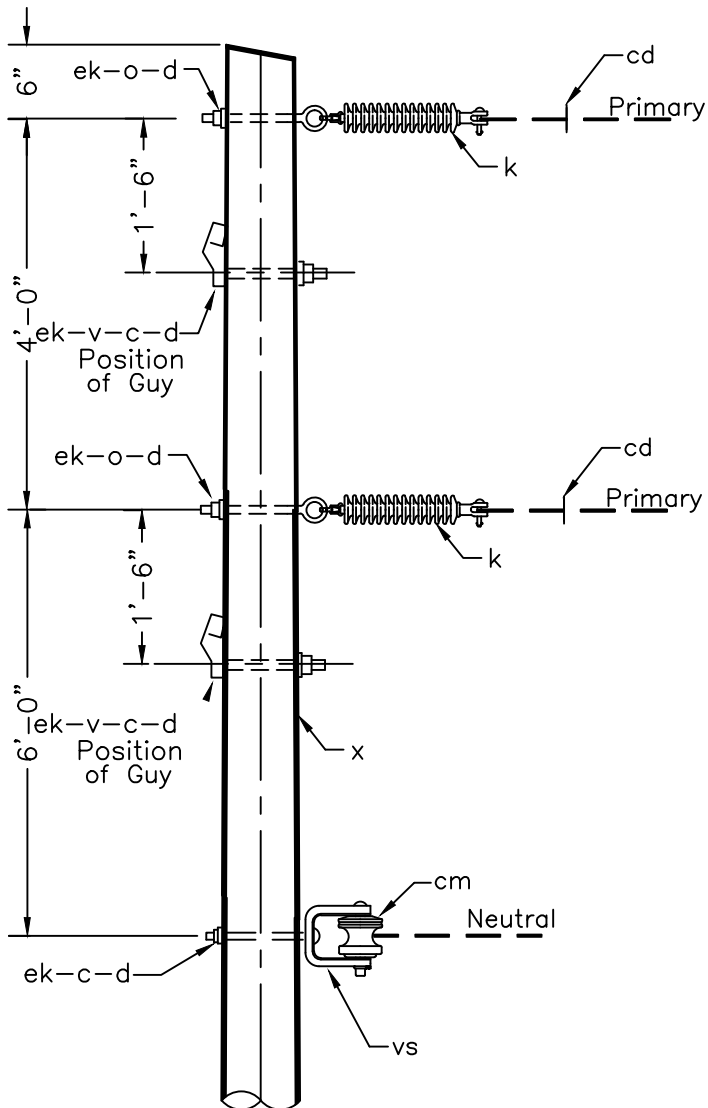
LINE DEPARTMENT

Dwg. Name:

Drawn By: C. Grant Date: June 1997
Approved By: M.SMITH Sheet: _____

B2-4

REVISIONS	DATE
BY: XAVIER A. ACEVEDO	3-24-9
BY: XAVIER A. ACEVEDO	8-9-11



TOP VIEW

NOTE:
FOR GUY ATTACHMENT DETAIL SEE "E3"

ITEM	NO.	MATERIAL
cm	1	Insulator, Porcelain Spool
x	1	Roof Cut Pole, height as req'd
c	3	Bolt, machine, 5/8" x req'd length
d	5	Washer, square, 5/8"
k	2	Insulator, Epoxilator Susp., 25KV
o	2	Bolt, Oval eye, 5/8" x req'd length
v	2	Guy attachment
cd	2	Angle assembly, primary
vs	1	Clevis, insulated, 3 1/4" x 4"
ek	5	Locknuts, as req'd

15KV & 25KV
TWO-PHASE VERTICAL CONSTRUCTION
30° TO 60° MAX. ANGLE

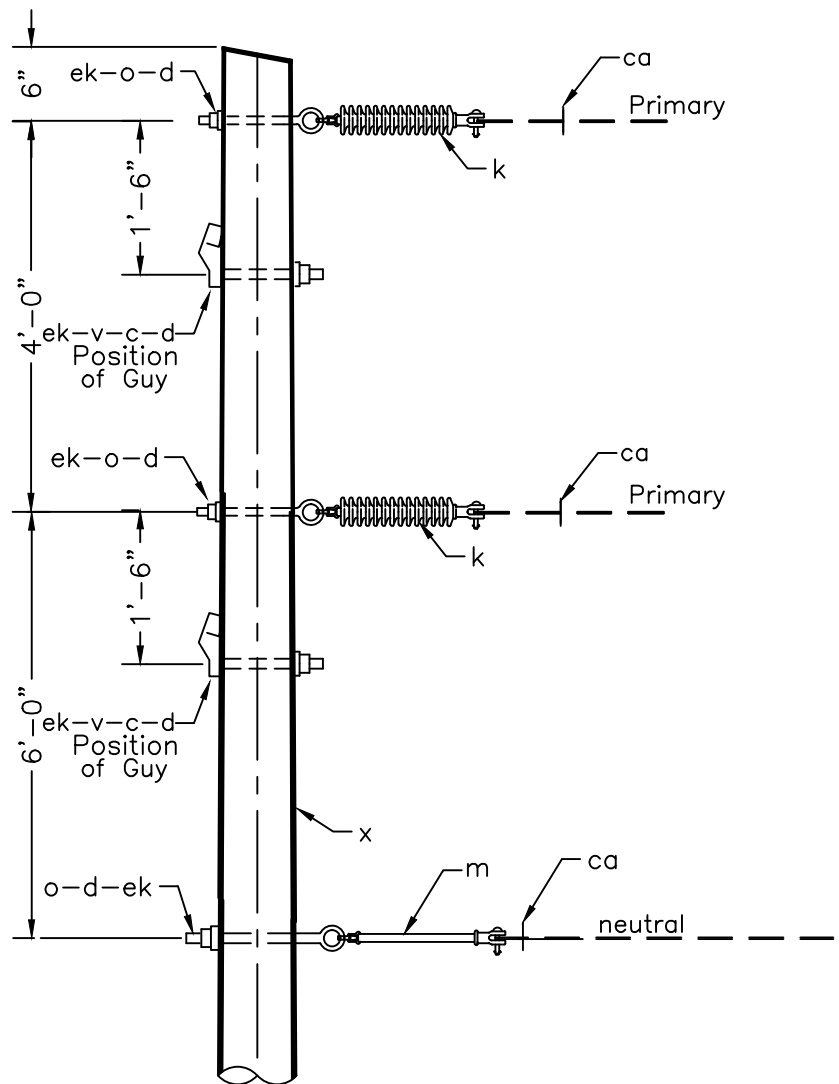
VIRGIN ISLANDS WATER AND POWER AUTHORITY
LINE DEPARTMENT

Dwg. Name:

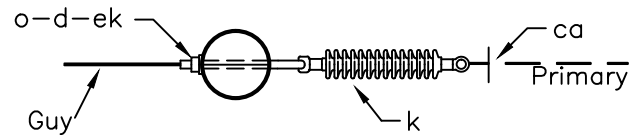
Drawn By: C. Grant Date: June 1997
Approved By: M.SMITH Sheet: _____

B3

REVISIONS	DATE
BY: XAVIER A. ACEVEDO	3-24-9
BY: XAVIER A. ACEVEDO	8-9-11



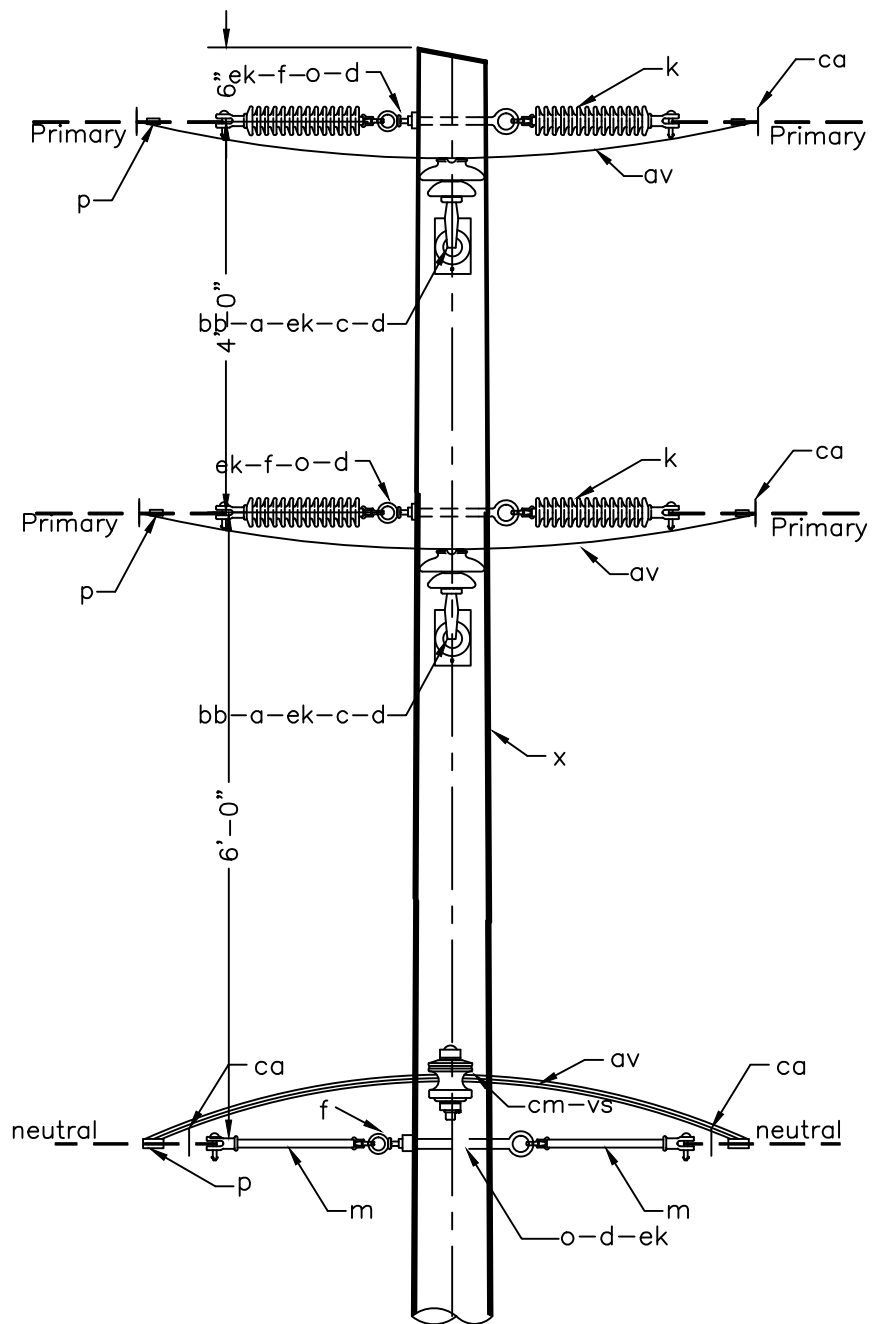
NOTE:
FOR GUY ATTACHMENT DETAIL SEE "E3"



TOP VIEW

ITEM	NO.	MATERIAL
m	1	12" Fiberglass rod
x	1	Roof cut Pole, height as req'd
c	2	Bolt, machine, 5/8" x req'd length
d	5	Washer, square, 5/8"
k	2	Insulator, Epoxilator Susp., 25KV
o	3	Bolt, Oval eye, 5/8" x req'd length
v	2	Guy attachment
ca	3	Dead-end shoe, manual
ek	5	Locknuts, as req'd

15KV & 25KV TWO-PHASE VERTICAL CONSTRUCTION SINGLE DEADEND	
VIRGIN ISLANDS WATER AND POWER AUTHORITY LINE DEPARTMENT	
Drawn By: C. Grant Approved By: M.SMITH	Date: June 1997 Sheet: _____
Dwg. Name: B5	



REVISIONS	DATE
BY: XAVIER A. ACEVEDO	3-24-9
BY: XAVIER A. ACEVEDO	8-9-11

ITEM	NO.	MATERIAL
x	1	Roof Cut Pole, height as req'd
d	9	Washer, square, 5/8"
k	4	Insulator, Epoxilator Susp., 25KV
o	3	Bolt, eye, 5/8"x req'd. length
p	6	Connectors, as req'd
vs	3	Clevis, insulated, 3 1/4" x 4"
av	3	Jumpers, as req'd
ca	6	Dead-end shoe, manual
cm	3	Insulator, Porcelain Spool
m	2	12" Fiberglass rod
ek	9	Locknuts, as req'd
bb	2	10" Vertical Fiberglass stand off, pin
c	5	Bolt, machine, 5/8" x req'd length
f	3	Oval eye nut
a	2	Insulator, pin type, 25KV

2 PHASE 15KV & 25KV
DOUBLE DEAD END VERTICAL CONSTRUCTION

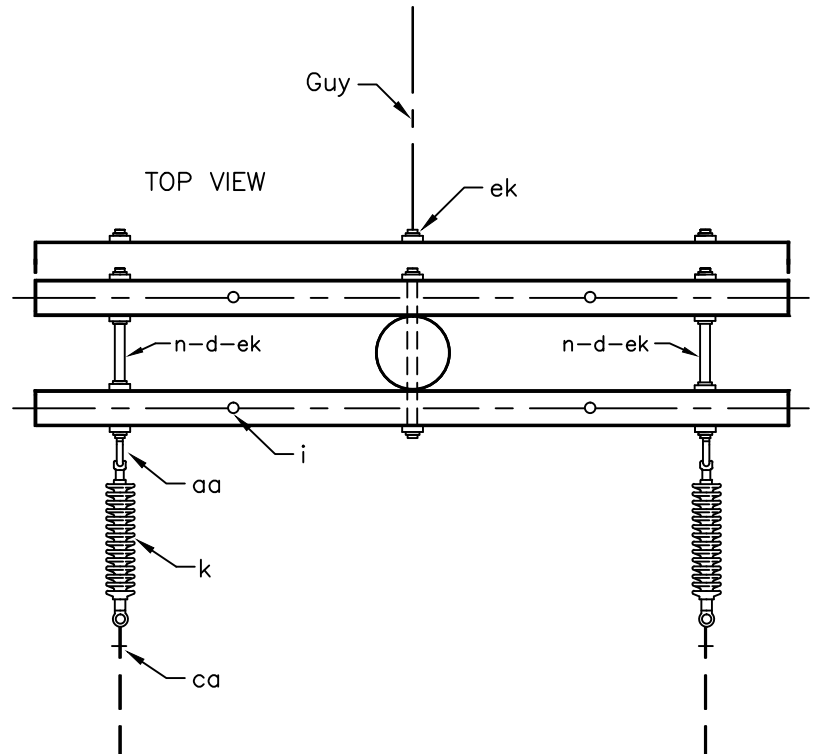
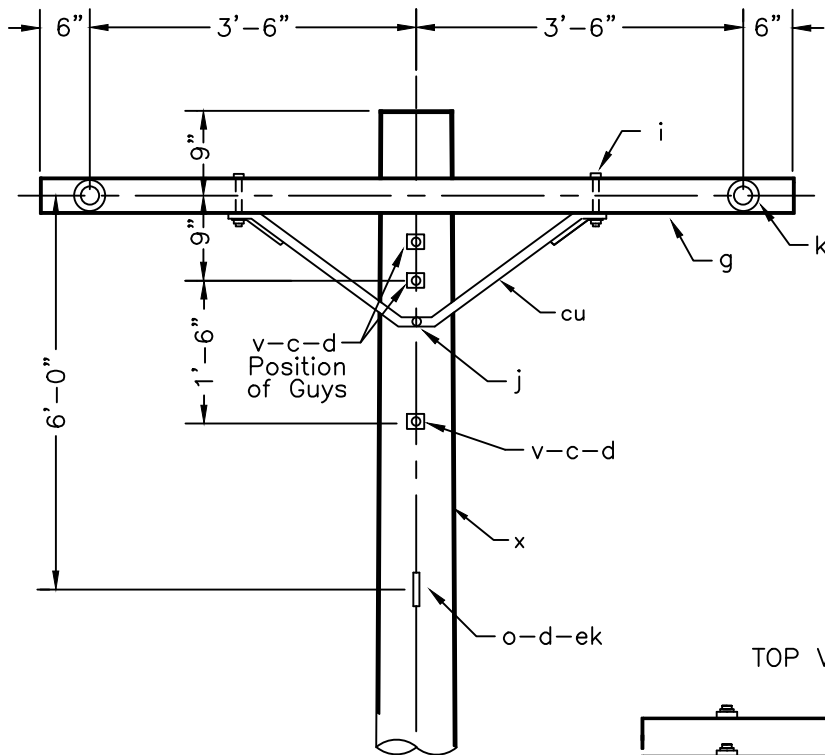
VIRGIN ISLANDS WATER AND POWER AUTHORITY
LINE DEPARTMENT

Dwg. Name:

Drawn By: C. Grant Date: June 1997
Approved By: M.SMITH Sheet: _____

B6

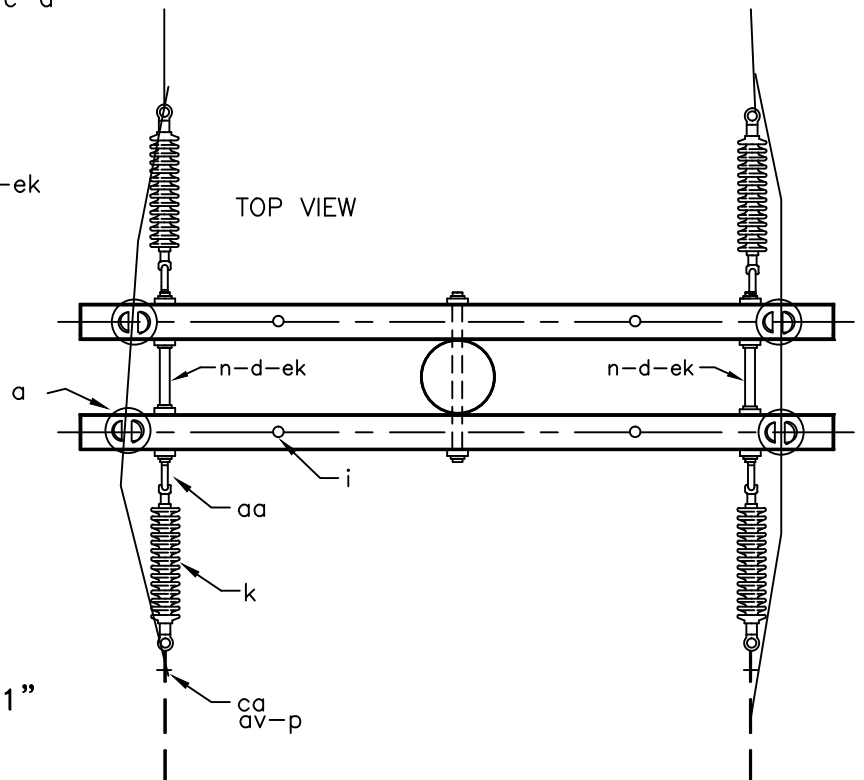
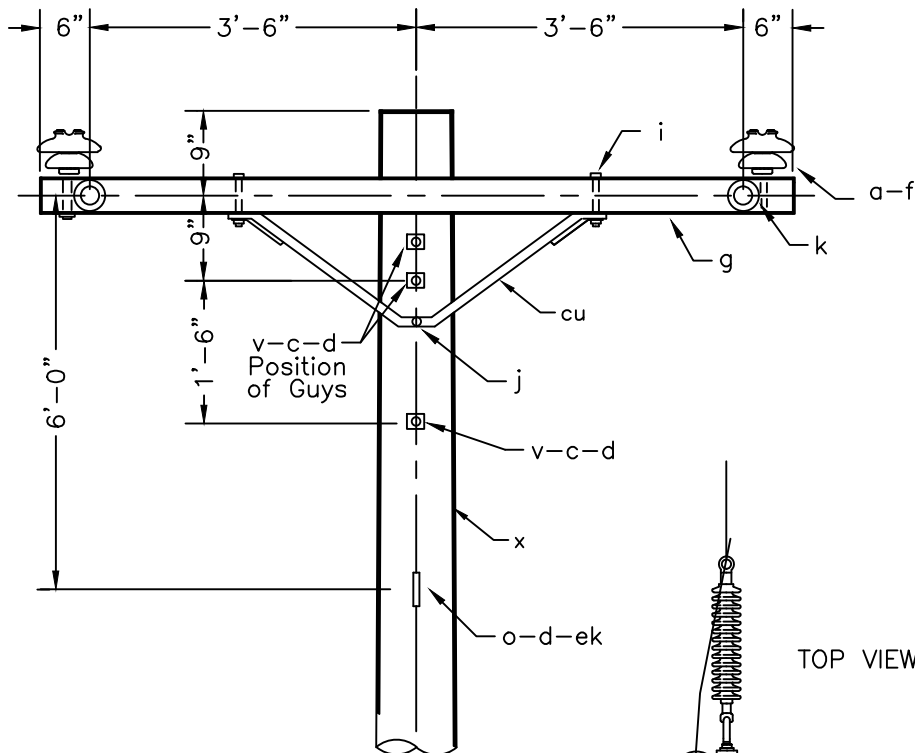
REVISIONS	DATE
BY: XAVIER A. ACEVEDO	9-21-11



NOTE:
FOR GUY ATTACHMENT DETAIL SEE "E1"

ITEM NO.	MATERIAL	ITEM NO.	MATERIAL
x 1	Pole, as req'd	cc 1	Deadend assembly, neutral
c 2	Bolt, machine, 5/8" x req'd length	cu 2	Brace, Double Span, 60"
d 13	Washer, square, 5/8"	ek	Locknuts, as req'd
g 3	Crossarm, 3 5/8" x 4 5/8" x 8'-0"	<p align="center">15KV & 25KV 2-PHASE CROSSARM CONSTRUCTION DEADEND (SINGLE)</p>	
i 4	Bolt, carriage, 1/2" x 6"		
j 2	Screw, lag, 1/2" X 5"		
k 2	Insulator, Epoxilator Susp., 25 KV	<p align="center">VIRGIN ISLANDS WATER AND POWER AUTHORITY LINE DEPARTMENT</p>	
n 2	Bolt, double arming, 5/8" x req'd length		
o 1	Bolt, Oval eye, 5/8" x req'd length	Drawn By: <u>C. Grant</u>	Date: <u>June 1997</u>
v 2	Guy attachment	Approved By: _____	Sheet: _____
aa 2	Nut, eye, 5/8"	<p align="right">Dwg. Name: B7</p>	
ca 2	Deadend assembly, primary		

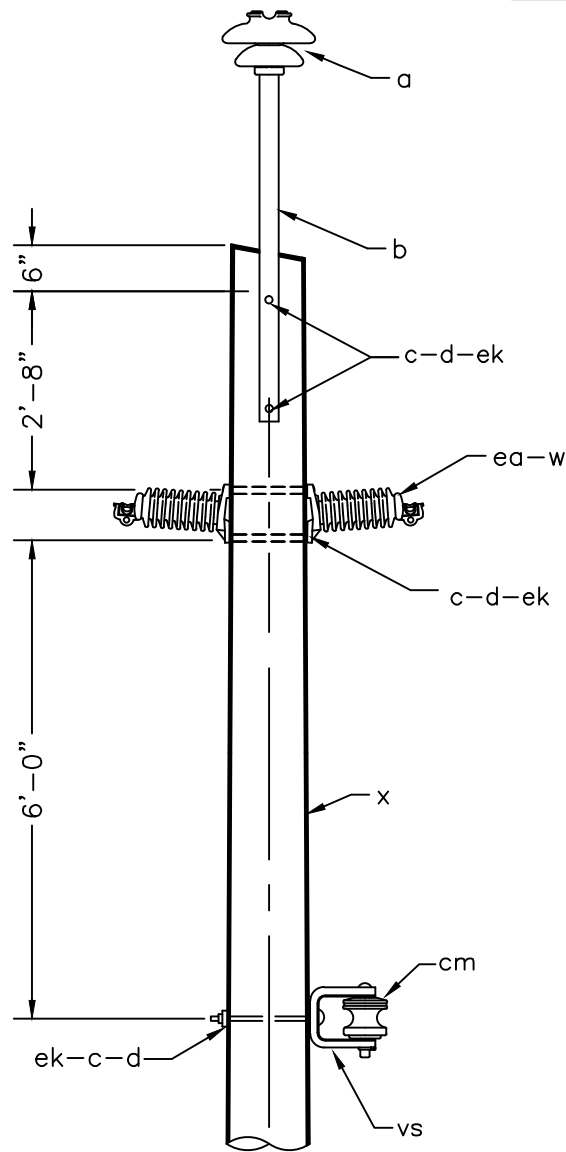
REVISIONS	DATE
BY: XAVIER A. ACEVEDO	9-21-11



NOTE:
FOR GUY ATTACHMENT DETAIL SEE "E1"

ITEM	NO.	MATERIAL	ITEM	NO.	MATERIAL
a	4	Pin type insulators 25KV	p	8	connectors as require
f	4	Cross arm pins 1 5/8"	av		jumpers as require
x	1	Pole, as req'd	cc	1	Deadend assembly, neutral
c	2	Bolt, machine, 5/8" x req'd length	cu	2	Brace, Double Span, 60"
d	13	Washer, square, 5/8"	ek		Locknuts, as req'd
g	2	Crossarm, 3 5/8" x 4 5/8" x 8'-0"	15KV & 25KV 2-PHASE CROSSARM CONSTRUCTION		
i	4	Bolt, carriage, 1/2" x 6"			
j	2	Screw, lag, 1/2" X 5"	VIRGIN ISLANDS WATER AND POWER AUTHORITY LINE DEPARTMENT		
k	4	Insulator, Epoxilator Susp., 25KV			
n	2	Bolt, double arming, 5/8" x req'd length	<div> <div> Dwg. Name: B-8 </div> <div> Drawn By: <u>C. Grant</u> Date: <u>June 1997</u> Approved By: _____ Sheet: _____ </div> </div>		
o	1	Bolt, Oval eye, 5/8" x req'd length			
v	2	Guy attachment			
aa	7	Nut, eye, 5/8"			
ca	4	Deadend assembly, primary			

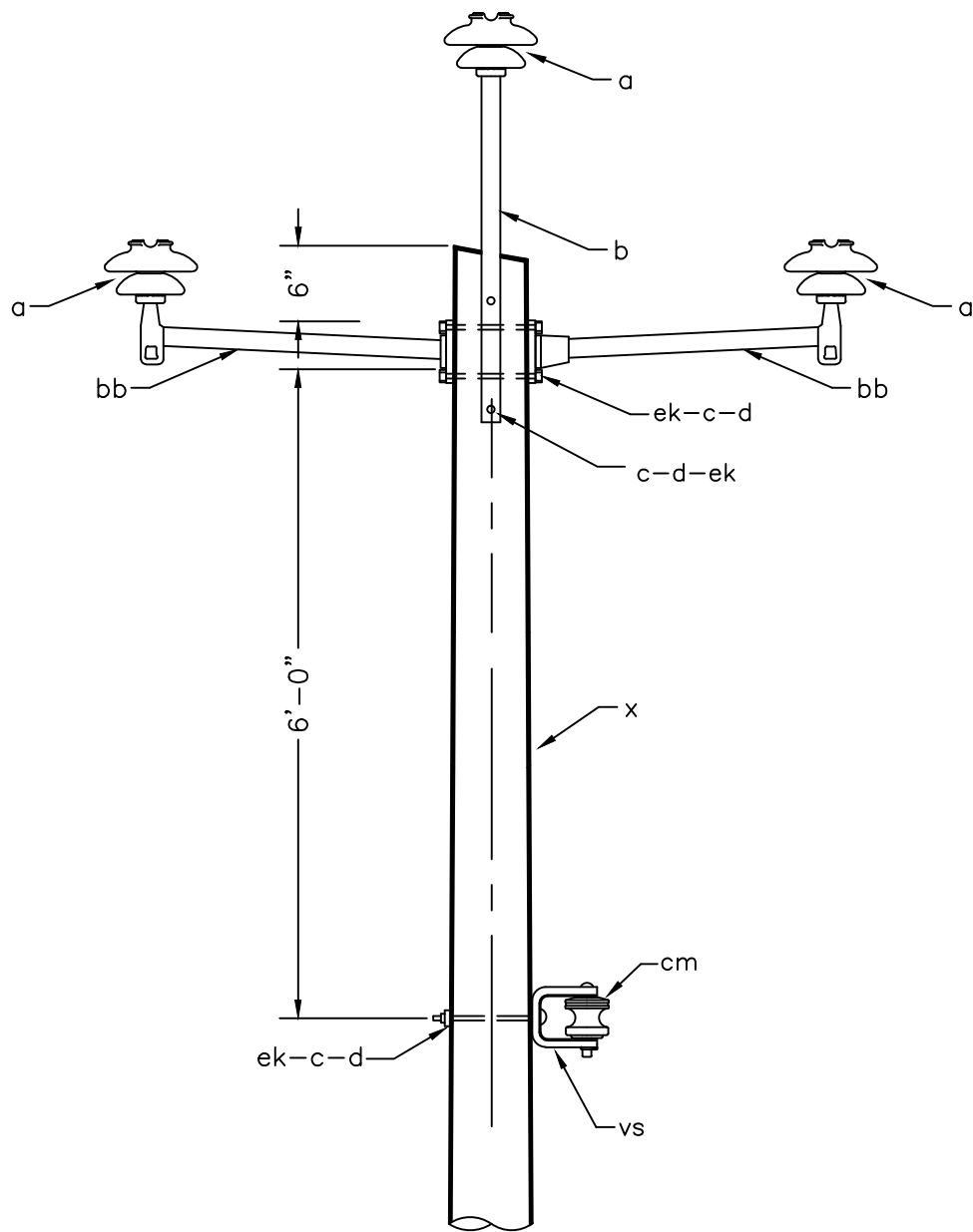
REVISIONS	DATE
BY: XAVIER A. ACEVEDO	3-24-9
BY: XAVIER A. ACEVEDO	8-9-11



ITEM	NO.	MATERIAL
x	1	Roof Cut Pole, height as req'd
vs	1	Clevis, insulated, 3 1/4" x 4"
c	5	Bolt, machine, 5/8" x req'd length
d	5	Washer, square, 5/8"
w	2	Clamp, straight line
cm	1	Insulator, spool, porcelain
ea	2	Insulator, Lapp line post, 25KV
ek	5	Locknuts, as req'd
a	1	Insulator, pin type, 25KV
b	1	12" or 30" Fiberglass pole top, pin

15KV & 25KV 3-PHASE CONSTRUCTION USING LAPP LINE POSTS (0° to 5°)	
VIRGIN ISLANDS WATER AND POWER AUTHORITY LINE DEPARTMENT	
Drawn By: <u>C. Grant</u> Approved By: <u>M.SMITH</u>	Date: <u>June 1997</u> Sheet: _____
Dwg. Name:	C1-1

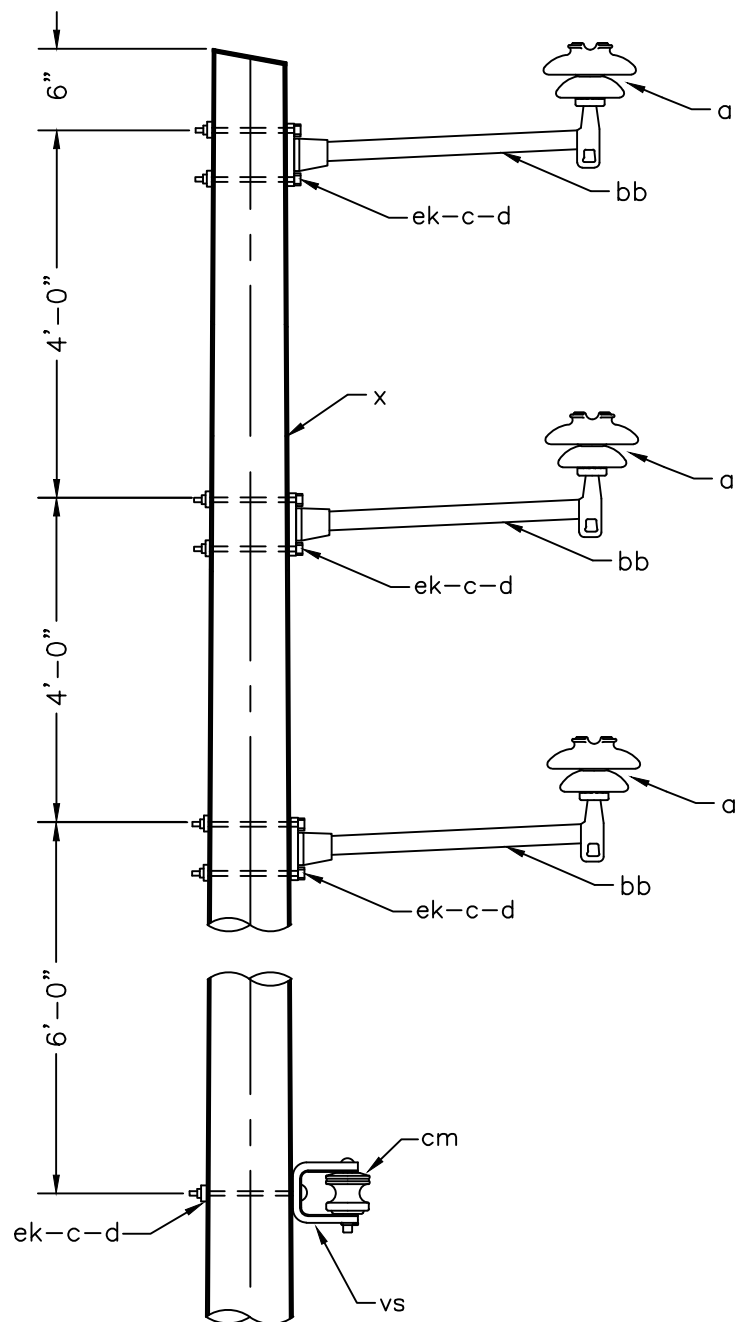
REVISIONS	DATE
BY: XAVIER A. ACEVEDO	3-24-9
BY: XAVIER A. ACEVEDO	8-9-11



ITEM	NO.	MATERIAL
x	1	Roof Cut Pole, height as req'd
vs	1	Clevis, insulated, 3 1/4" x 4"
c	5	Bolt, machine, 5/8" x req'd length
d	5	Washer, square, 5/8"
a	3	Insulator, pin type, 25KV
cm	1	Insulator, spool, porcelain
bb	2	16" or 24" Vertical fiberglass stand off, pin
ek	5	Locknuts, as req'd
b	1	12" or 30" Fiberglass pole top, pin

15KV & 25KV 3-PHASE CONSTRUCTION USING STANDOFF PINS (0° TO 5°)	
VIRGIN ISLANDS WATER AND POWER AUTHORITY LINE DEPARTMENT	
Drawn By: <u>C. Grant</u> Approved By: <u>M.SMITH</u>	Date: <u>June 1997</u> Sheet: _____
Dwg. Name:	C1-2

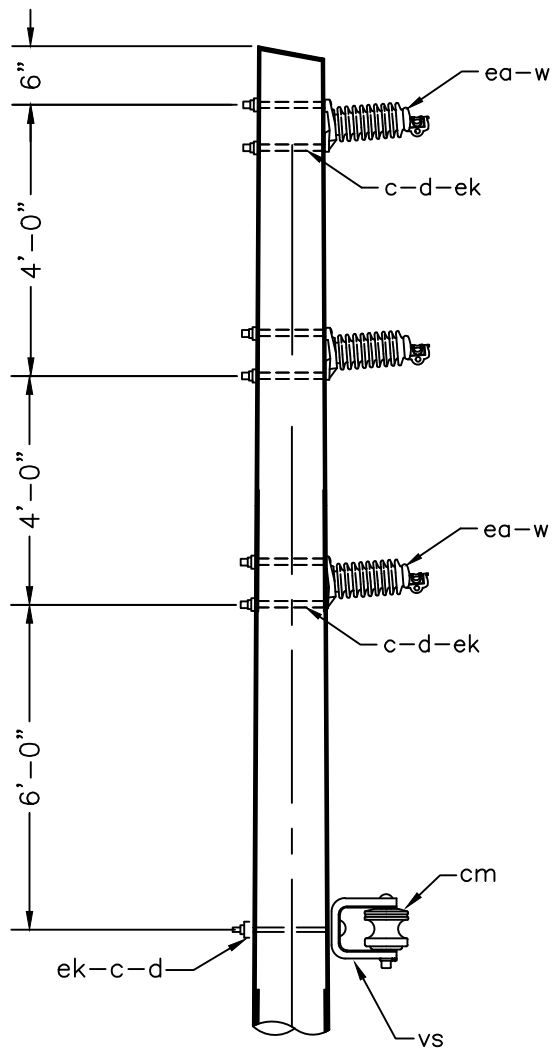
REVISIONS	DATE
BY: XAVIER A. ACEVEDO	3-24-9
BY: XAVIER A. ACEVEDO	8-9-11



ITEM	NO.	MATERIAL
x	1	Roof Cut Pole, height as req'd
vs	1	Clevis, insulated, 3 1/4" x 4"
c	7	Bolt, machine, 5/8" x req'd length
d	7	Washer, square, 5/8"
a	3	Insulator, pin type, 25KV
cm	1	Insulator, spool, porcelain
bb	3	16" or 24" Vertical fiberglass stand off, pin
ek	7	Locknuts, as req'd

15KV & 25KV 3-PHASE CONSTRUCTION USING STANDOFF PINS (0° TO 5°)	
VIRGIN ISLANDS WATER AND POWER AUTHORITY LINE DEPARTMENT	
Drawn By: <u>C. Grant</u> Date: <u>June 1997</u>	Dwg. Name: <u>C1-3</u>
Approved By: <u>M.SMITH</u> Sheet: <u> </u>	

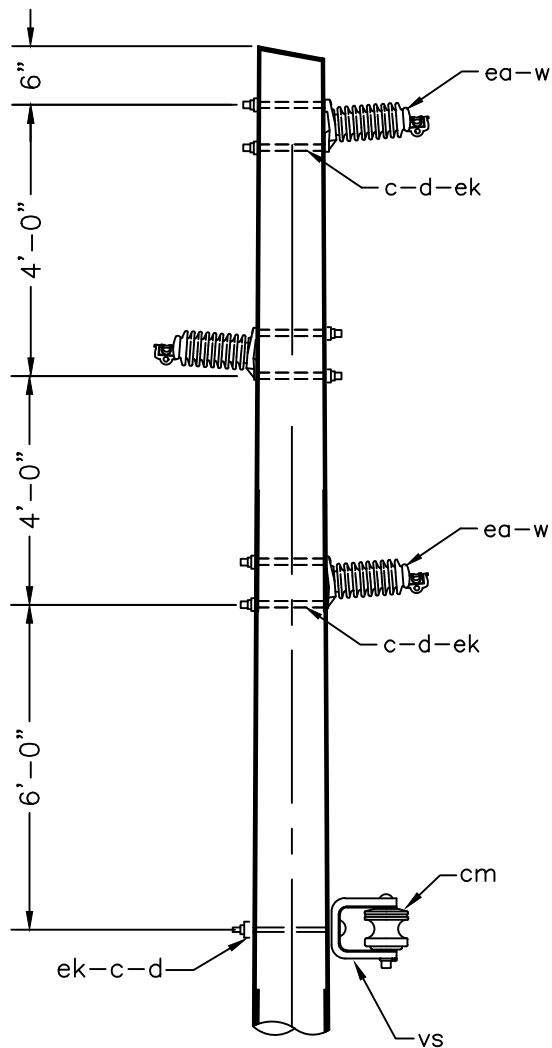
REVISIONS	DATE
BY: XAVIER A. ACEVEDO	3-24-9
BY: XAVIER A. ACEVEDO	8-9-11



ITEM	NO.	MATERIAL
vs	1	Clevis, insulated, 3 1/4" x 4"
x	1	Roof Cut Pole, height as req'd
c	7	Bolt, machine, 5/8" x req'd length
d	7	Washer, square, 5/8"
w	3	Clamp, straight
ea	3	Insulator, Lapp line post 25KV OR 35KV
cm	1	Insulator, spool, porcelain
ek	7	Locknuts, as req'd

15KV, 25KV & 35KV 3-PHASE CONSTRUCTION USING LAPP LINE POSTS (0° TO 5° MAX. ANGLE)	
VIRGIN ISLANDS WATER AND POWER AUTHORITY LINE DEPARTMENT	
Drawn By: XAA _____ Approved By: _____	Date: <u>June 1997</u> Sheet: _____
Dwg. Name: C1-4	

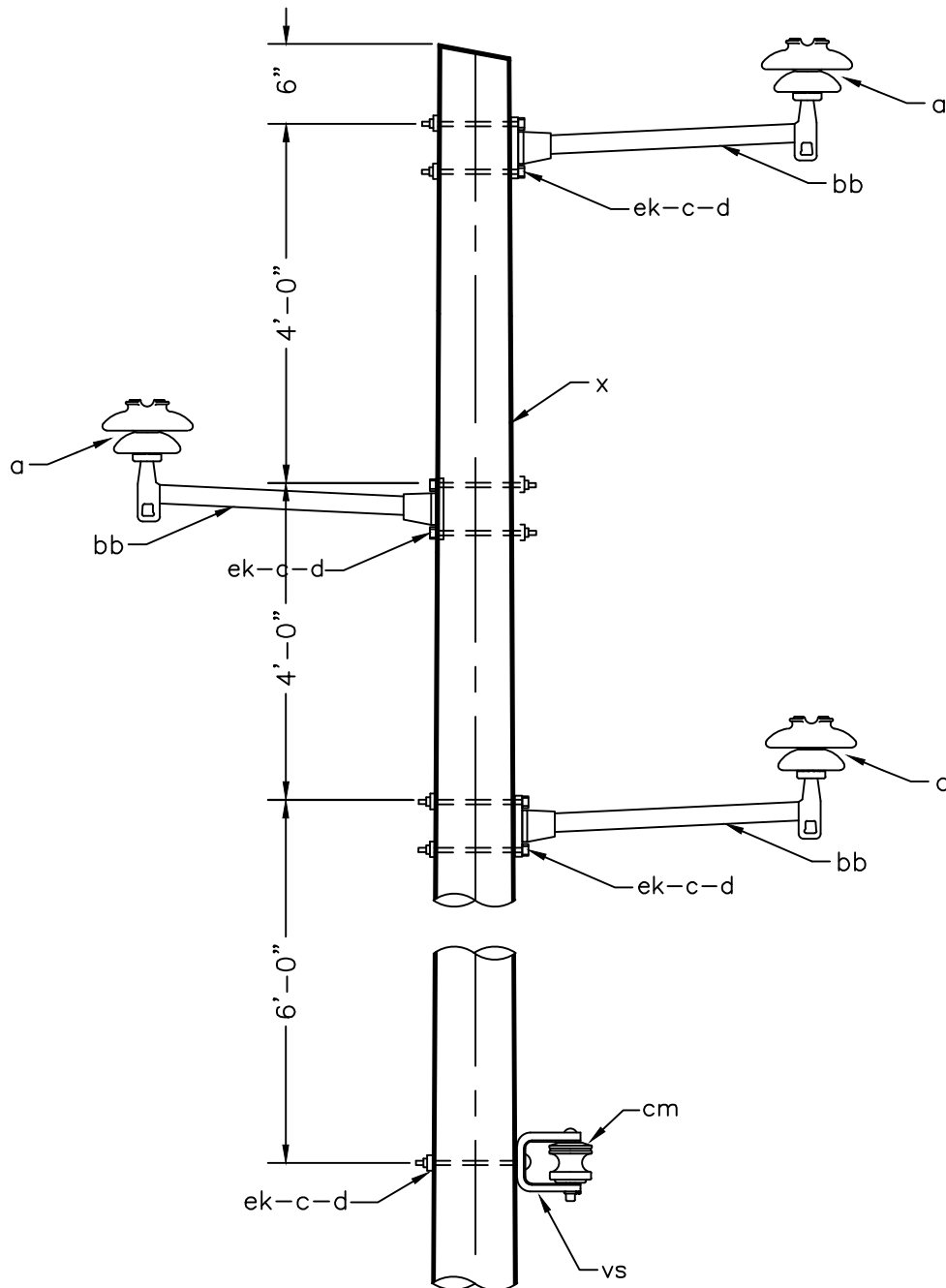
REVISIONS	DATE
BY: XAVIER A. ACEVEDO	3-24-9
BY: XAVIER A. ACEVEDO	8-9-11



ITEM	NO.	MATERIAL
vs	1	Clevis, insulated, 3 1/4" x 4"
x	1	Roof Cut Pole, height as req'd
c	7	Bolt, machine, 5/8" x req'd length
d	7	Washer, square, 5/8"
w	3	Clamp, straight
ea	3	Insulator, Lapp line post 25KV OR 35KV
cm	1	Insulator, spool, porcelain
ek	7	Locknuts, as req'd

<p align="center">15KV, 25KV & 35KV 3-PHASE CONSTRUCTION USING LAPP LINE POSTS (0° TO 5° MAX. ANGLE)</p>	
<p align="center">VIRGIN ISLANDS WATER AND POWER AUTHORITY LINE DEPARTMENT</p>	
<p>Drawn By: <u>C. Grant</u> Date: <u>June 1997</u> Approved By: <u>M.SMITH</u> Sheet: _____</p>	<p>Dwg. Name: C1-5</p>

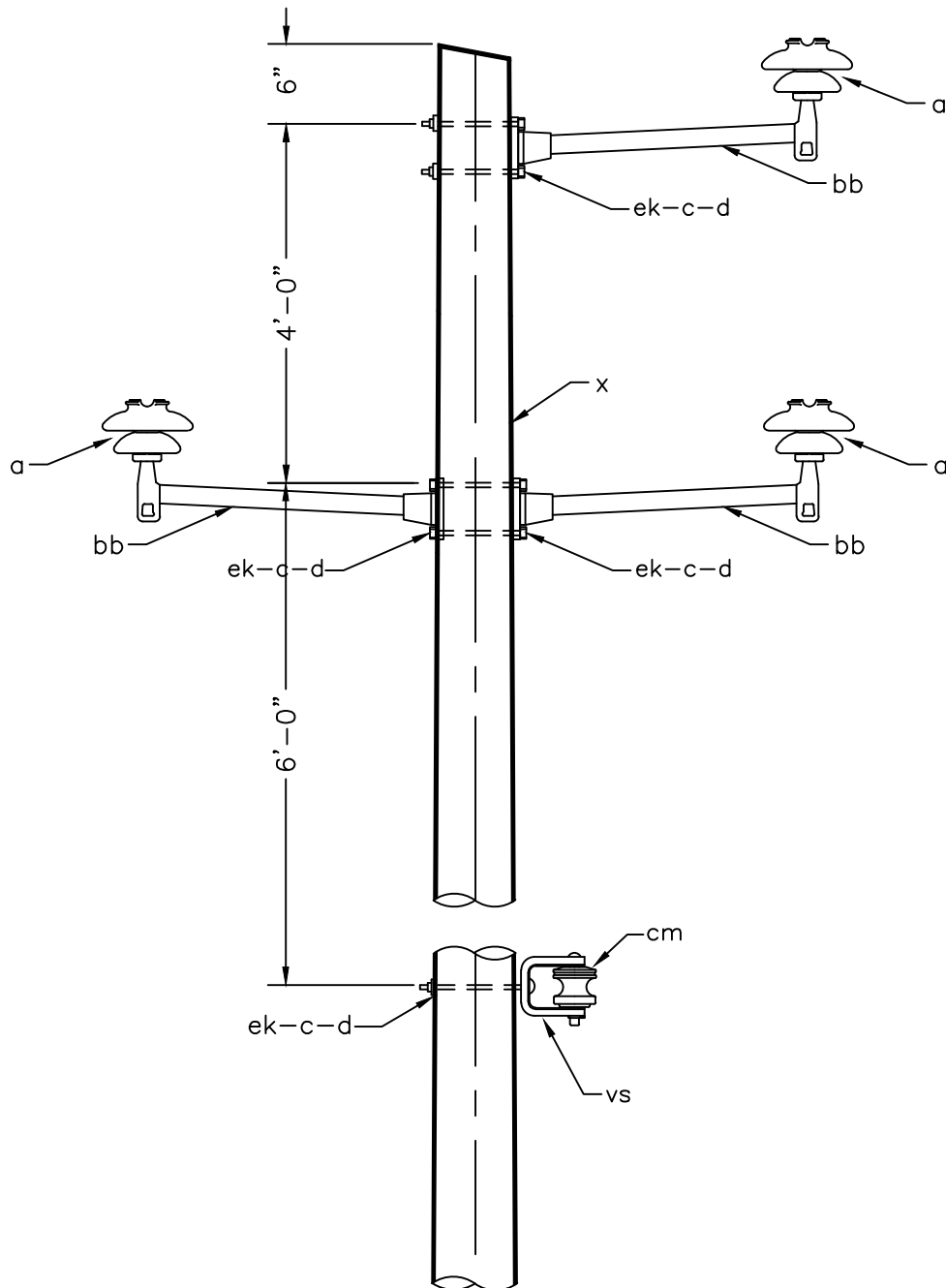
REVISIONS	DATE
BY: XAVIER A. ACEVEDO	3-24-9
BY: XAVIER A. ACEVEDO	8-9-11



ITEM	NO.	MATERIAL
x	1	Roof Cut Pole, height as req'd
vs	1	Clevis, insulated, 3 1/4" x 4"
c	7	Bolt, machine, 5/8" x req'd length
d	7	Washer, square, 5/8"
a	3	Insulator, pin type, 25KV
cm	1	Insulator, spool, porcelain
bb	3	16" or 24" Vertical fiberglass stand off, pin
ek	7	Locknuts, as req'd

15KV & 25KV 3-PHASE CONSTRUCTION USING STANDOFF PINS (0° TO 5°)	
VIRGIN ISLANDS WATER AND POWER AUTHORITY LINE DEPARTMENT	
Drawn By: <u>C. Grant</u> Approved By: <u>M.SMITH</u>	Date: <u>June 1997</u> Sheet: _____
Dwg. Name: C1-6	

REVISIONS	DATE
BY: XAVIER A. ACEVEDO	3-24-9
BY: XAVIER A. ACEVEDO	8-9-11



ITEM	NO.	MATERIAL
x	1	Roof Cut Pole, height as req'd
vs	1	Clevis, insulated, 3 1/4" x 4"
c	7	Bolt, machine, 5/8" x req'd length
d	7	Washer, square, 5/8"
a	3	Insulator, pin type, 25KV
cm	1	Insulator, spool, porcelain
bb	3	16" or 24" Vertical fiberglass stand off, pin
ek	7	Locknuts, as req'd

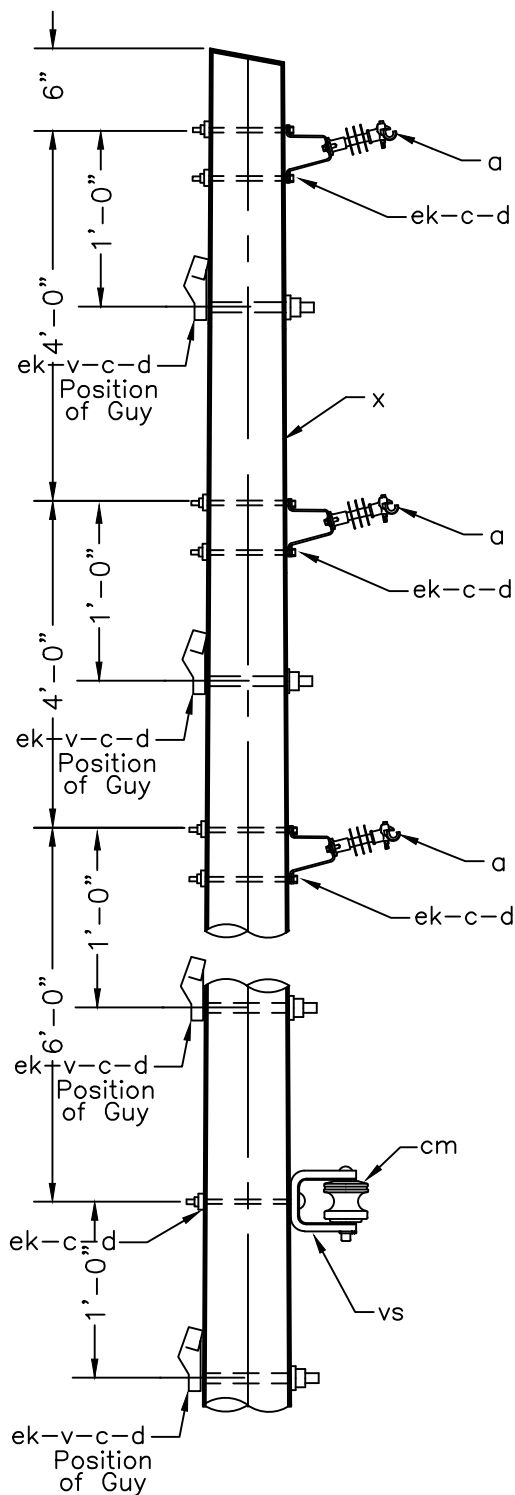
15KV & 25KV
3-PHASE CONSTRUCTION USING
STANDOFF PINS (0° TO 5°)

VIRGIN ISLANDS WATER AND POWER AUTHORITY
LINE DEPARTMENT

Drawn By: C. Grant Date: June 1997
Approved By: M.SMITH Sheet: _____

Dwg. Name:

C1-7



REVISIONS	DATE
BY: XAVIER A. ACEVEDO	3-24-9
BY: XAVIER A. ACEVEDO	8-9-11
BY: XAVIER A. ACEVEDO	11-20-17

ITEM	NO.	MATERIAL
x	1	Roof Cut Pole, height as req'd
vs	1	Clevis, insulated, 3 1/4" x 4"
c	11	Bolt, machine, 1" x req'd length
d	11	Washer, Curve 1"
a	3	K-Clamp with 9" Bracket
cm	1	Insulator, spool, porcelain
ek	11	Locknuts, as req'd
v	4	Guy attachment

15KV & 25KV
3-PHASE CONSTRUCTION USING
K-CLAMP (0° TO 5°)

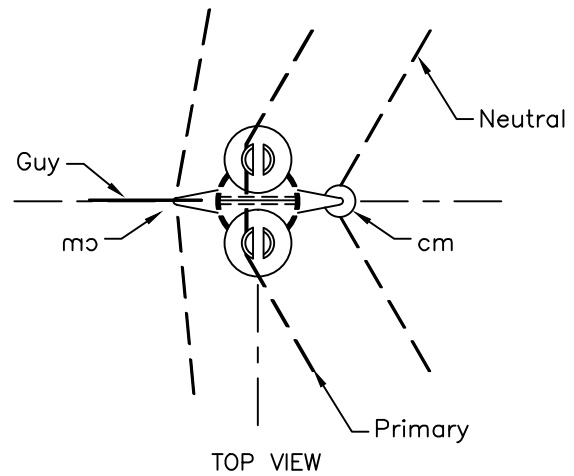
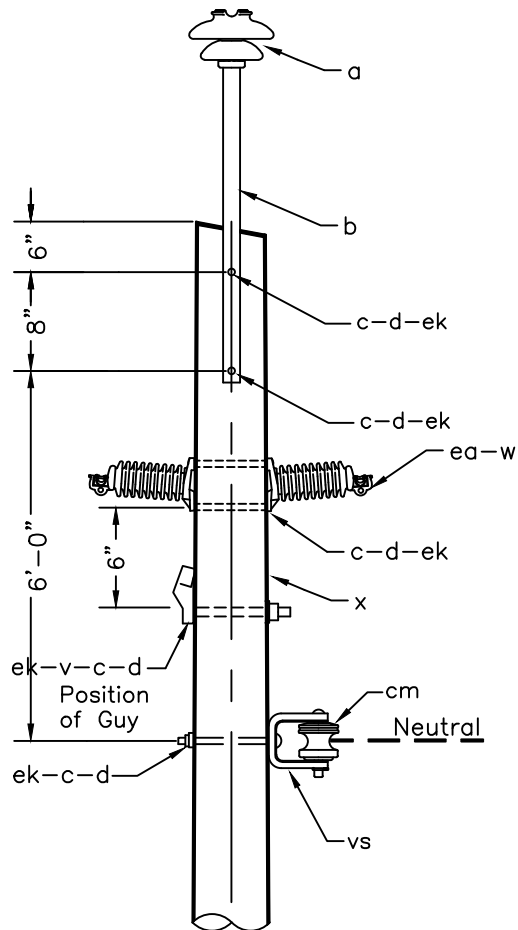
VIRGIN ISLANDS WATER AND POWER AUTHORITY
LINE DEPARTMENT

Dwg. Name:

Drawn By: C. Grant Date: June 1997
Approved By: M.Holder Sheet: _____

C1-8

REVISIONS	DATE
BY: XAVIER A. ACEVEDO	3-24-9
BY: XAVIER A. ACEVEDO	8-9-11



ITEM	NO.	MATERIAL
x	1	Roof Cut Pole, height as req'd
a	2	Insulator, pin type, 25KV
b	2	12" or 30" Fiberglass pole top, pin
c	6	Bolt, machine, 5/8" x req'd length
d	6	Washer, square, 5/8"
v	1	Guy attachment
cm	1	Insulator, Porcelain Spool
vs	1	Clevis, insulated, 3 1/4" x 4"
ek	6	Locknuts, as req'd
ea	2	Insulator, Lapp line post, 25KV
w	2	Clamp, straight

NOTE:

FOR GUY ATTACHMENT DETAIL SEE "E1"

15KV & 25KV
3-PHASE CONSTRUCTION
W/K-CLAMPS (5° TO 30°)

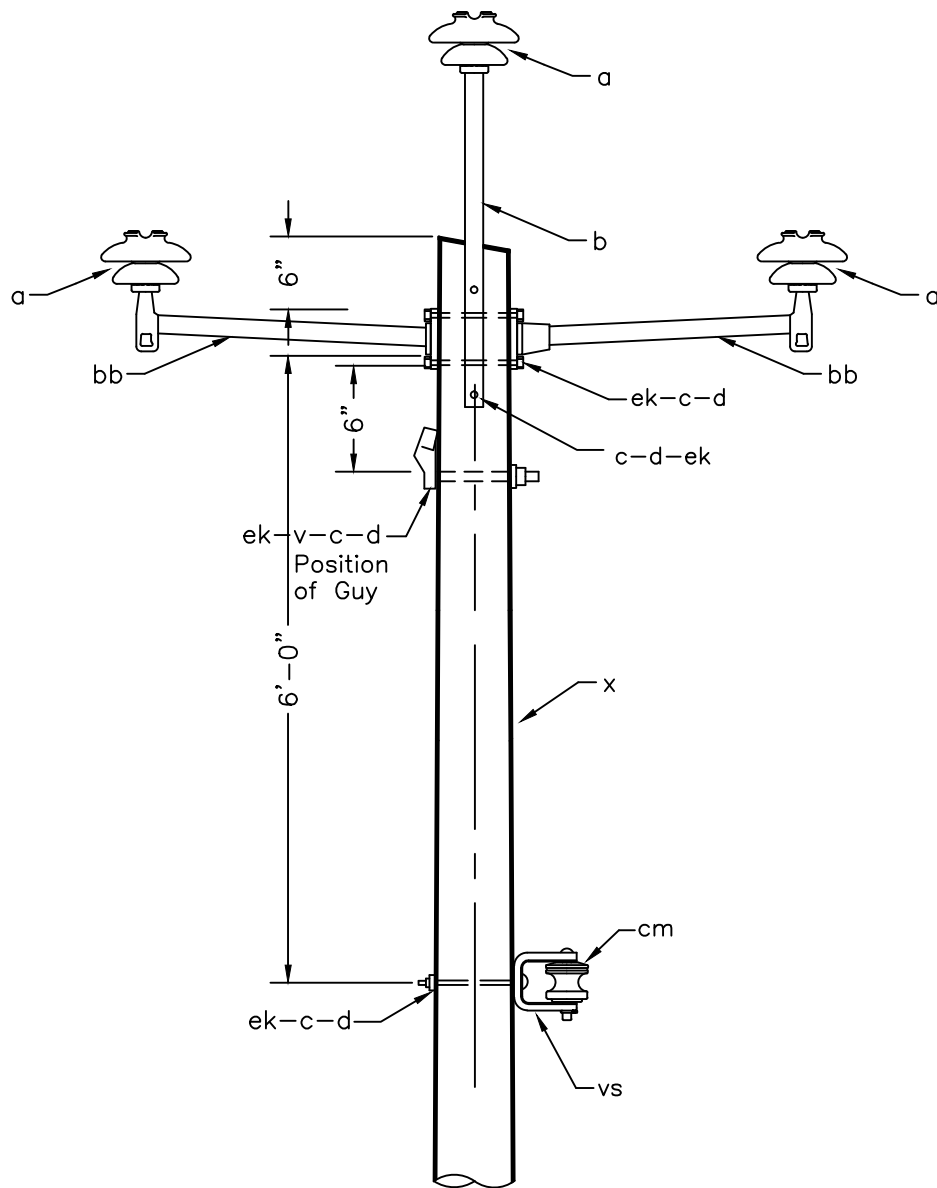
VIRGIN ISLANDS WATER AND POWER AUTHORITY
LINE DEPARTMENT

Dwg. Name:

Drawn By: C. Grant Date: June 1997
Approved By: M.SMITH Sheet: _____

C2-1

REVISIONS	DATE
BY: XAVIER A. ACEVEDO	3-24-9
BY: XAVIER A. ACEVEDO	8-9-11
BY: XAVIER A. ACEVEDO	11-21-17

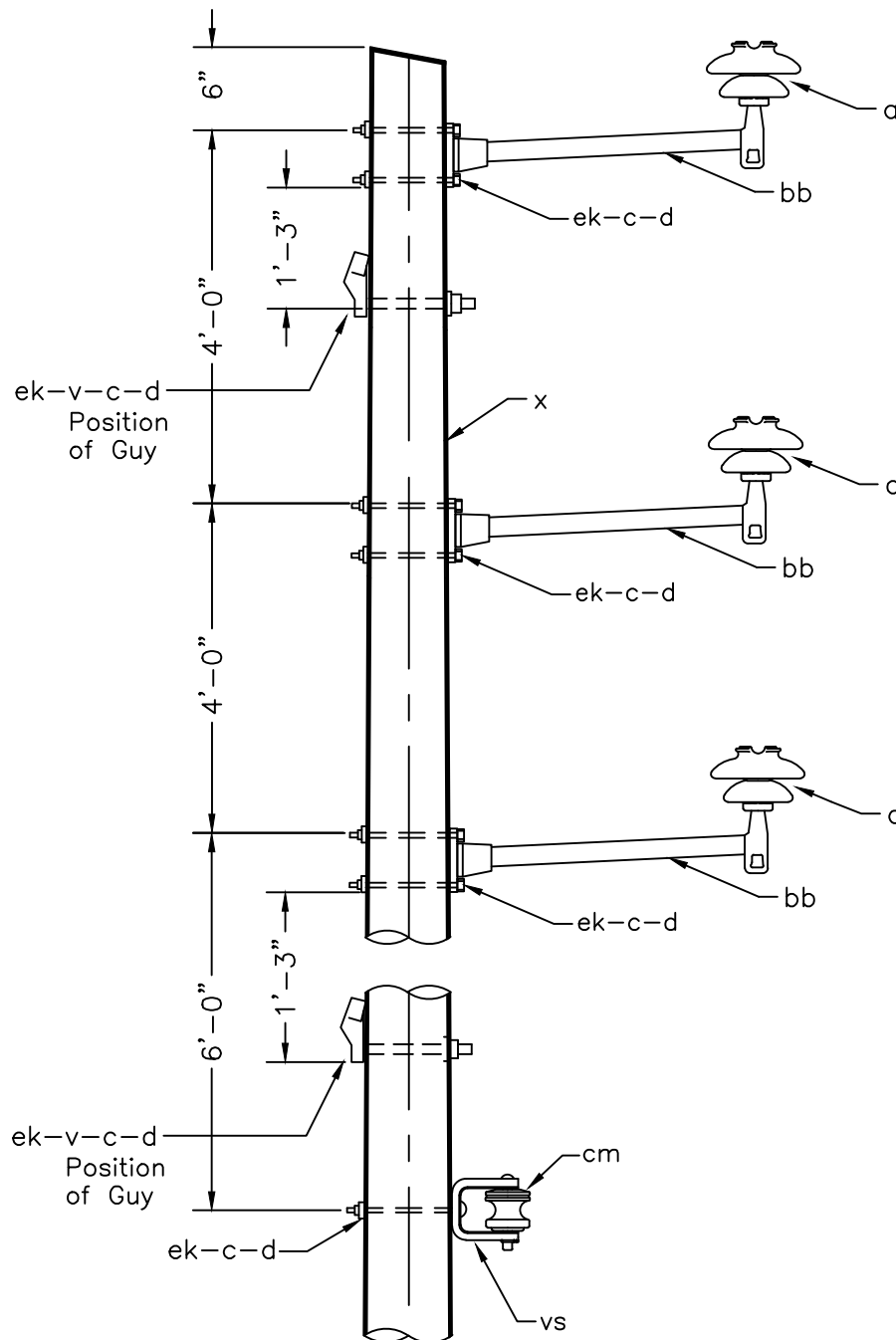


ITEM	NO.	MATERIAL
x	1	Roof Cut Pole, height as req'd
vs	1	Clevis, insulated, 3 1/4" x 4"
c	5	Bolt, machine, 5/8" x req'd length
d	5	Washer, square, 5/8"
a	3	Insulator, pin type, 25KV
cm	1	Insulator, spool, porcelain
bb	2	16" or 24" Vertical fiberglass stand off, pin
ek	5	Locknuts, as req'd
b	1	12" or 30" Fiberglass pole top, pin
v	1	Guy attachment

NOTE:
FOR GUY ATTACHMENT DETAIL SEE "E1"

15KV & 25KV 3-PHASE CONSTRUCTION USING STANDOFF PINS (5° TO 30°)	
VIRGIN ISLANDS WATER AND POWER AUTHORITY LINE DEPARTMENT	
Drawn By: C. Grant Approved By: _____	Date: June 1997 Sheet: _____
Dwg. Name: C2-2	

REVISIONS	DATE
BY: XAVIER A. ACEVEDO	3-24-9
BY: XAVIER A. ACEVEDO	8-9-11
BY: XAVIER A. ACEVEDO	11-21-17

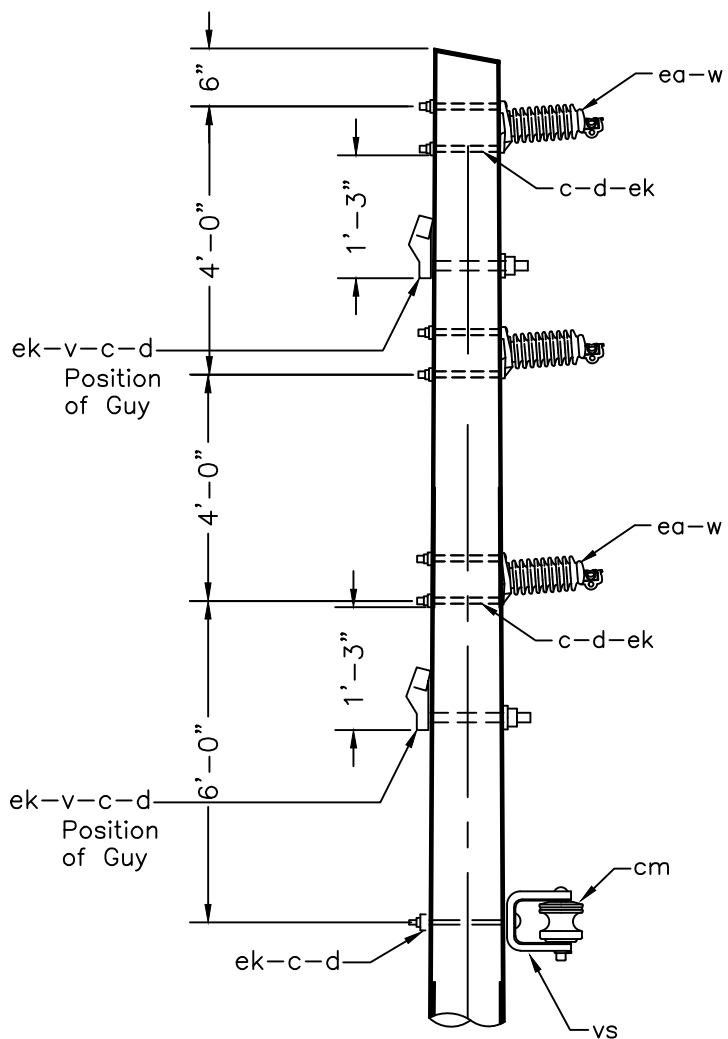


NOTE:
FOR GUY ATTACHMENT DETAIL SEE "E1"

ITEM	NO.	MATERIAL
x	1	Roof Cut Pole, height as req'd
vs	1	Clevis, insulated, 3 1/4" x 4"
c	7	Bolt, machine, 5/8" x req'd length
d	7	Washer, square, 5/8"
a	3	Insulator, pin type, 25KV
cm	1	Insulator, spool, porcelain
bb	3	16" or 24" Vertical fiberglass stand off, pin
ek	7	Locknuts, as req'd
v	2	Guy Attachment

15KV & 25KV 3-PHASE CONSTRUCTION USING STANDOFF PINS (5° TO 30°)	
VIRGIN ISLANDS WATER AND POWER AUTHORITY LINE DEPARTMENT	
Drawn By: <u>C. Grant</u>	Date: <u>June 1997</u>
Approved By: _____	Sheet: _____
Dwg. Name: <u>C2-3</u>	

REVISIONS	DATE
BY: XAVIER A. ACEVEDO	3-24-9
BY: XAVIER A. ACEVEDO	8-9-11
BY: XAVIER A. ACEVEDO	11-21-17



NOTE:
FOR GUY ATTACHMENT DETAIL SEE "E1"

ITEM	NO.	MATERIAL
vs	1	Clevis, insulated, 3 1/4" x 4"
x	1	Roof Cut Pole, height as req'd
c	7	Bolt, machine, 5/8" x req'd length
d	7	Washer, square, 5/8"
w	3	Clamp, straight
ea	3	Insulator, Lapp line post 25KV OR 35KV
cm	1	Insulator, spool, porcelain
ek	7	Locknuts, as req'd
v	2	Guy Attachment

15KV, 25KV & 35KV
3-PHASE CONSTRUCTION USING
LAPP LINE POSTS (5° TO 30° MAX. ANGLE)

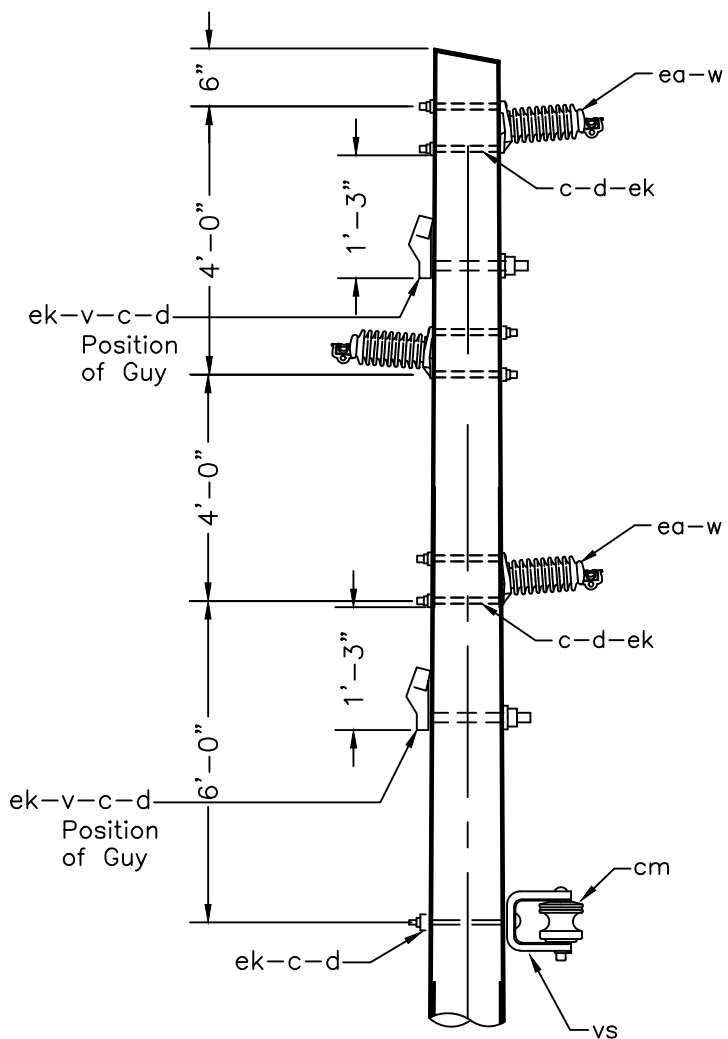
VIRGIN ISLANDS WATER AND POWER AUTHORITY
LINE DEPARTMENT

Dwg. Name:

Drawn By: XAA Date: June 1997
Approved By: _____ Sheet: _____

C2-4

REVISIONS	DATE
BY: XAVIER A. ACEVEDO	3-24-9
BY: XAVIER A. ACEVEDO	8-9-11
BY: XAVIER A. ACEVEDO	11-21-17

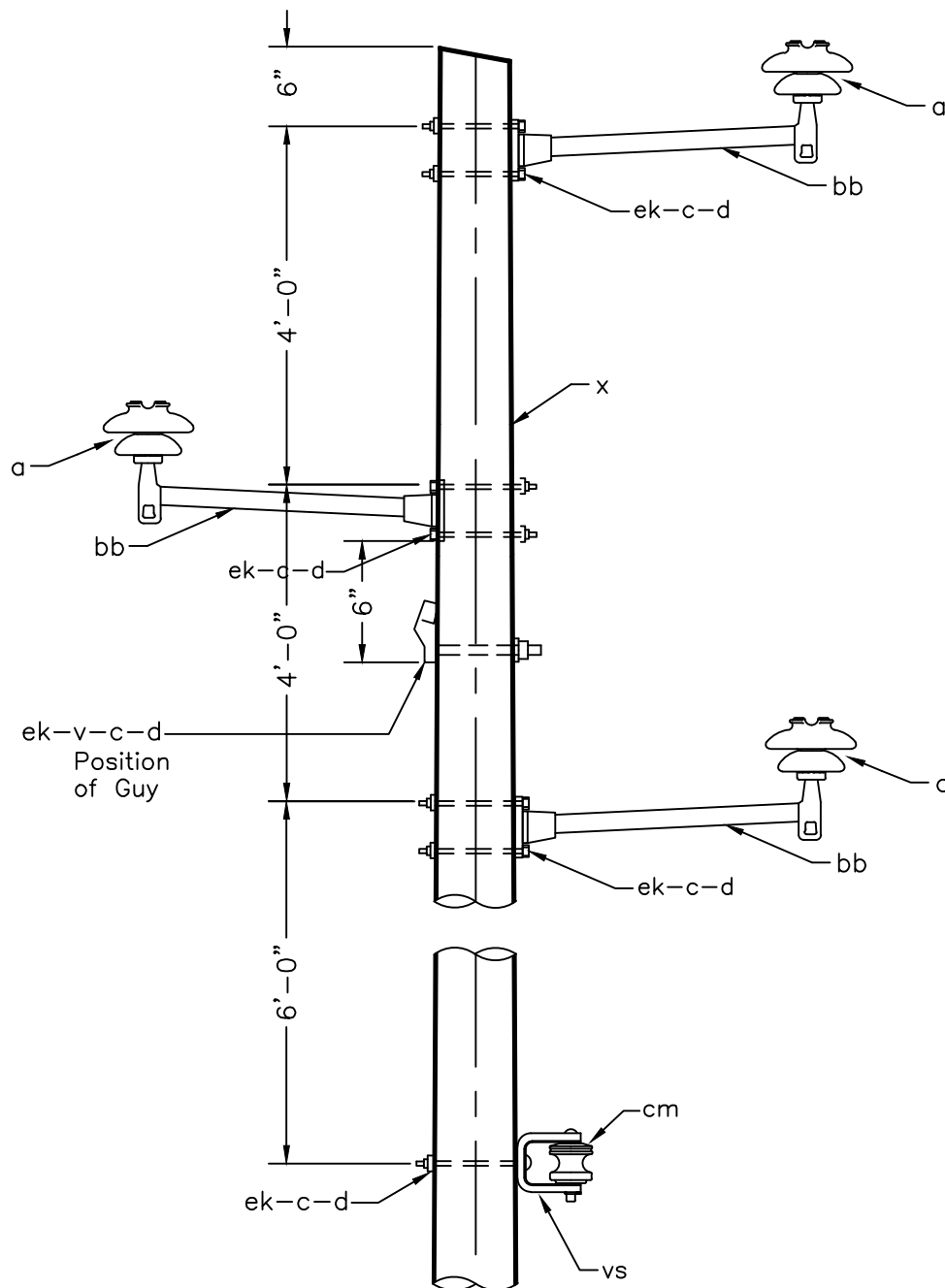


NOTE:
FOR GUY ATTACHMENT DETAIL SEE "E1"

ITEM	NO.	MATERIAL
vs	1	Clevis, insulated, 3 1/4" x 4"
x	1	Roof Cut Pole, height as req'd
c	7	Bolt, machine, 5/8" x req'd length
d	7	Washer, square, 5/8"
w	3	Clamp, straight
ea	3	Insulator, Lapp line post 25KV OR 35KV
cm	1	Insulator, spool, porcelain
ek	7	Locknuts, as req'd
v	2	Guy Attachment

15KV, 25KV & 35KV 3-PHASE CONSTRUCTION USING LAPP LINE POSTS (5° TO 30° MAX. ANGLE)	
VIRGIN ISLANDS WATER AND POWER AUTHORITY LINE DEPARTMENT	
Drawn By: XAA	Date: June 1997
Approved By: _____	Sheet: _____
Dwg. Name: C2-5	

REVISIONS	DATE
BY: XAVIER A. ACEVEDO	3-24-9
BY: XAVIER A. ACEVEDO	8-9-11
BY: XAVIER A. ACEVEDO	11-21-17

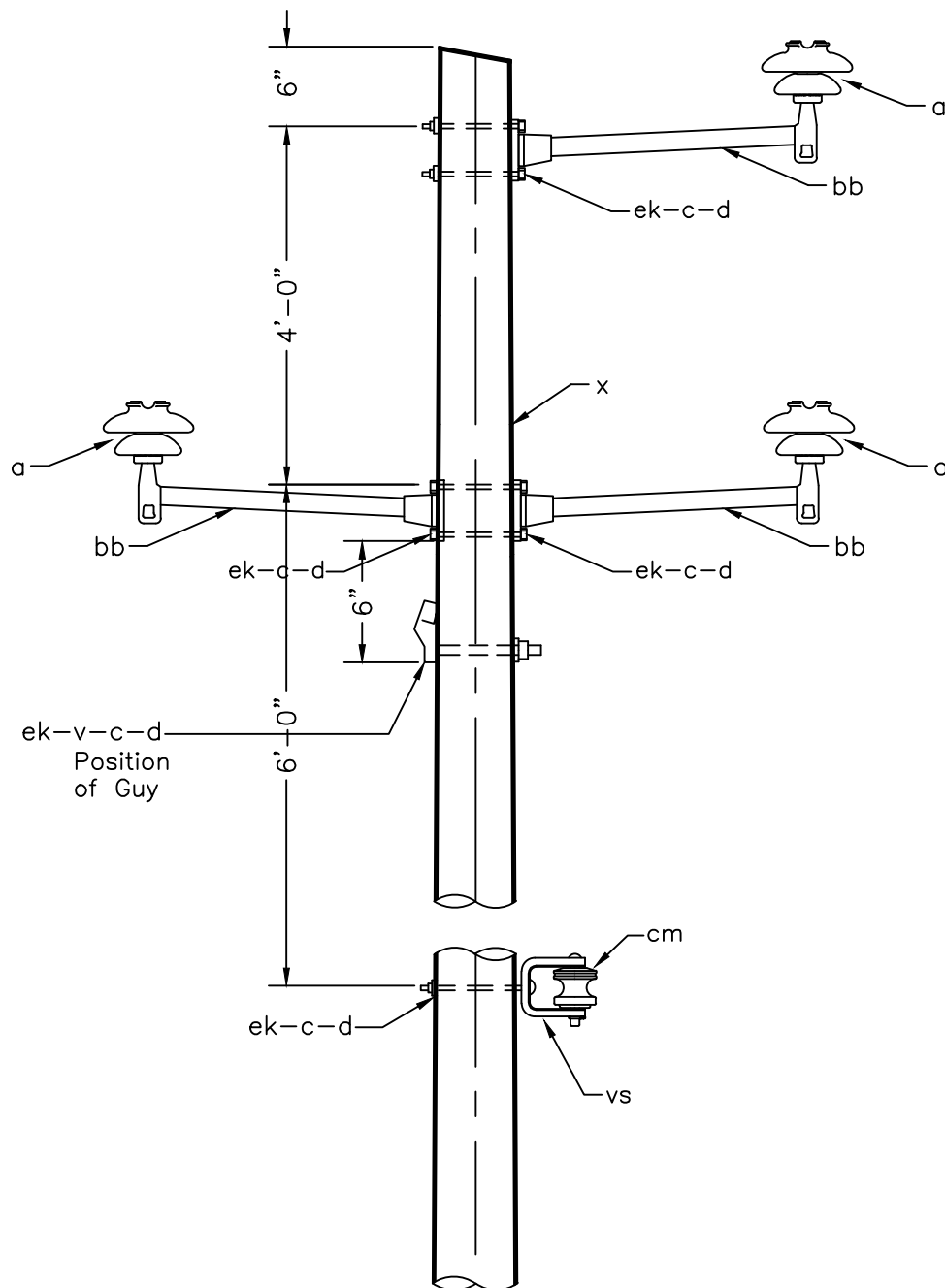


NOTE:
FOR GUY ATTACHMENT DETAIL SEE "E1"

ITEM	NO.	MATERIAL
x	1	Roof Cut Pole, height as req'd
vs	1	Clevis, insulated, 3 1/4" x 4"
c	7	Bolt, machine, 5/8" x req'd length
d	7	Washer, square, 5/8"
a	3	Insulator, pin type, 25KV
cm	1	Insulator, spool, porcelain
bb	3	16" or 24" Vertical fiberglass stand off, pin
ek	7	Locknuts, as req'd
v	1	Guy Attachment

15KV & 25KV 3-PHASE CONSTRUCTION USING STANDOFF PINS (5° TO 30°)	
VIRGIN ISLANDS WATER AND POWER AUTHORITY LINE DEPARTMENT	
Drawn By: XAA	Date: June 1997
Approved By: _____	Sheet: _____
Dwg. Name: C2-6	

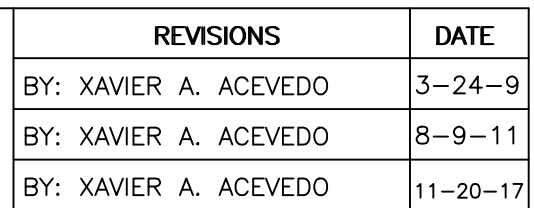
REVISIONS	DATE
BY: XAVIER A. ACEVEDO	3-24-9
BY: XAVIER A. ACEVEDO	8-9-11
BY: XAVIER A. ACEVEDO	11-21-17



NOTE:
FOR GUY ATTACHMENT DETAIL SEE "E1"

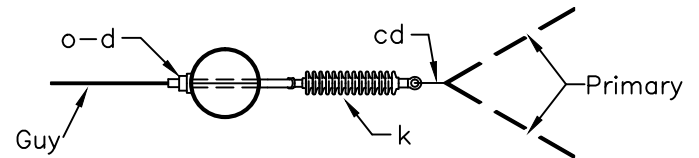
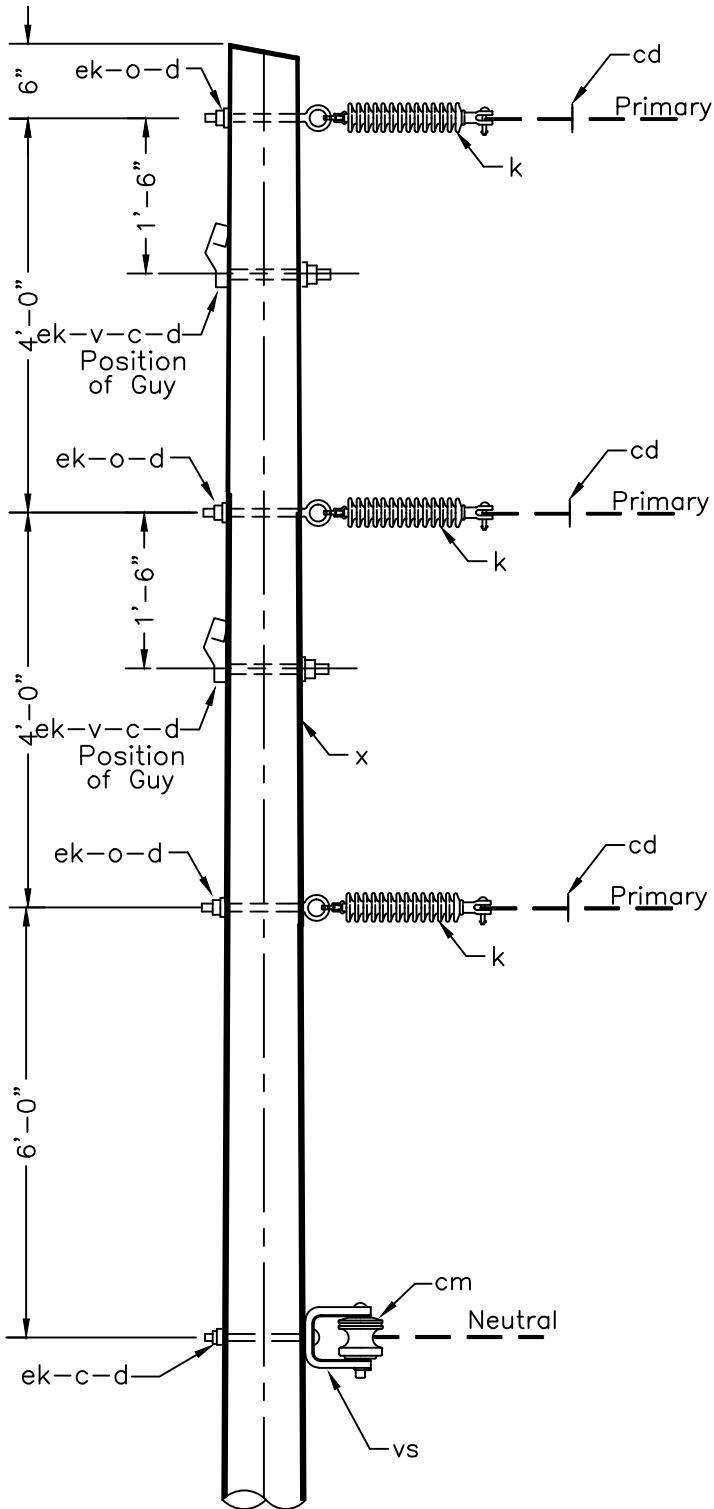
ITEM	NO.	MATERIAL
x	1	Roof Cut Pole, height as req'd
vs	1	Clevis, insulated, 3 1/4" x 4"
c	7	Bolt, machine, 5/8" x req'd length
d	7	Washer, square, 5/8"
a	3	Insulator, pin type, 25KV
cm	1	Insulator, spool, porcelain
bb	3	16" or 24" Vertical fiberglass stand off, pin
ek	7	Locknuts, as req'd
v	1	Guy Attachment

15KV & 25KV 3-PHASE CONSTRUCTION USING STANDOFF PINS (5° TO 30°)	
VIRGIN ISLANDS WATER AND POWER AUTHORITY LINE DEPARTMENT	
Drawn By: XAA	Date: June 1997
Approved By: _____	Sheet: _____
Dwg. Name: C2-7	



15KV & 25KV 3-PHASE CONSTRUCTION USING K-CLAMP (5° TO 30°)	
VIRGIN ISLANDS WATER AND POWER AUTHORITY	
LINE DEPARTMENT	
Drawn By: <u>C. Grant</u> Date: <u>June 1997</u> Approved By: <u>M. Holder</u> Sheet: <u> </u>	Dwg. Name: <div style="font-size: 2em; font-weight: bold; text-align: center;">C2-8</div>

REVISIONS	DATE
BY: XAVIER A. ACEVEDO	3-24-9
BY: XAVIER A. ACEVEDO	8-9-11



TOP VIEW

ITEM	NO.	MATERIAL
cm	1	Insulator, Porcelain Spool
x	1	Roof Cut Pole, height as req'd
c	3	Bolt, machine, 5/8" x req'd length
d	6	Washer, square, 5/8"
k	3	Insulator, Epoxilator Susp.,25KV OR 35KV
o	3	Bolt, Oval eye, 5/8" x req'd length
v	2	Guy attachment
cd	3	Angle assembly, primary
vs	1	Clevis, insulated, 3 1/4" x 4"
ek	6	Locknuts, as req'd

NOTE:
FOR GUY ATTACHMENT DETAIL SEE "E3"

15KV, 25KV & 35KV
3-PHASE VERTICAL CONSTRUCTION
30° to 60° MAX. ANGLE

VIRGIN ISLANDS WATER AND POWER AUTHORITY

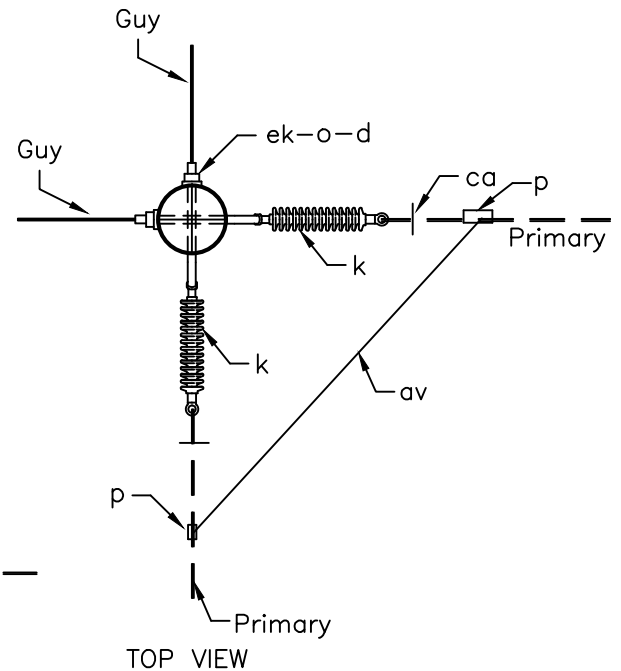
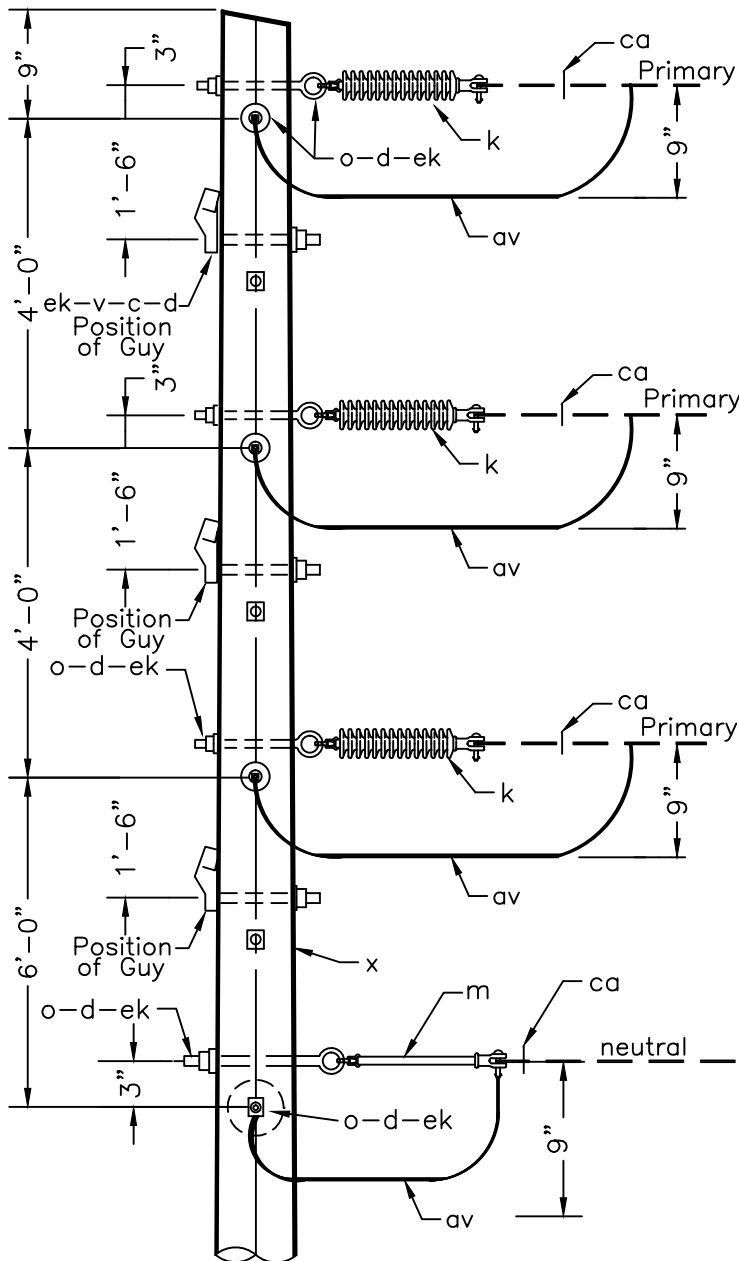
LINE DEPARTMENT

Dwg. Name:

Drawn By: C. Grant Date: June 1997
Approved By: M.SMITH Sheet: _____

C3

REVISIONS	DATE
BY: XAVIER A. ACEVEDO	3-24-9
BY: XAVIER A. ACEVEDO	8-9-11



ITEM	NO.	MATERIAL
x	1	Roof Cut Pole, height as req'd
c	6	Bolt, machine, 5/8" x req'd length
d	14	Washer, square, 5/8"
k	6	Insulator, Epoxiator Susp., 25KV OR 35KV
p	8	Connectors, as req'd
v	6	Guy attachment
ca	8	Dead-end shoe, manual
m	2	12" Fiberglass rod
ek	14	Locknuts, as req'd
o	8	Bolt, Oval eye, 5/8" x req'd length
av	4	Jumpers, as req'd

NOTE:
FOR GUY ATTACHMENT DETAIL SEE "E3"

15KV, 25KV & 35KV
3-PHASE VERTICAL CONSTRUCTION
60° TO 90° MAX. ANGLE

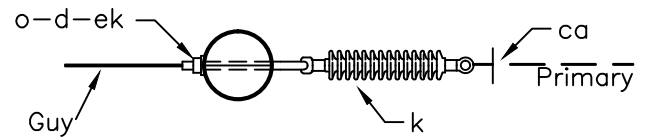
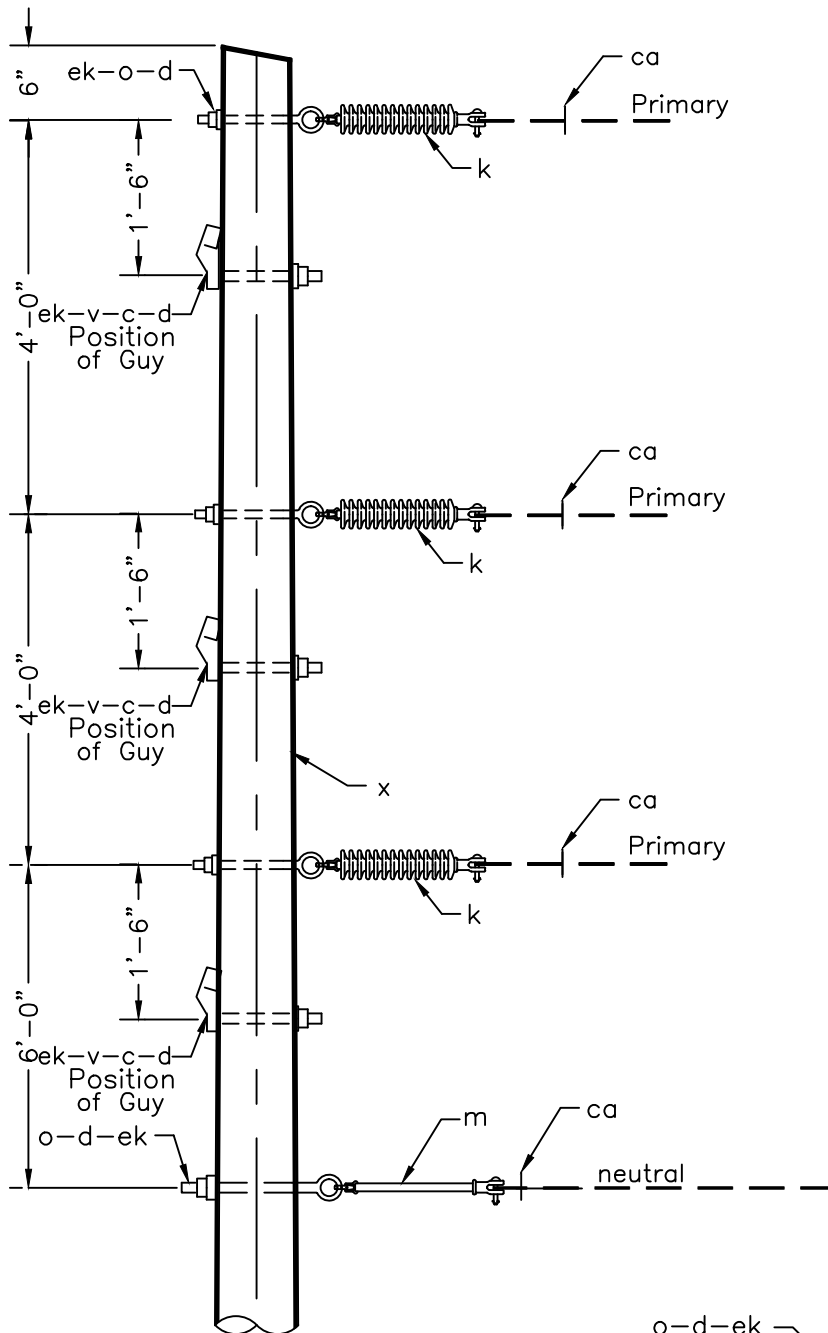
VIRGIN ISLANDS WATER AND POWER AUTHORITY
LINE DEPARTMENT

Drawn By: C. Grant Date: June 1997
Approved By: M. SMITH Sheet: _____

Dwg. Name:

C4

REVISIONS	DATE
BY: XAVIER A. ACEVEDO	3-24-9
BY: XAVIER A. ACEVEDO	8-9-11



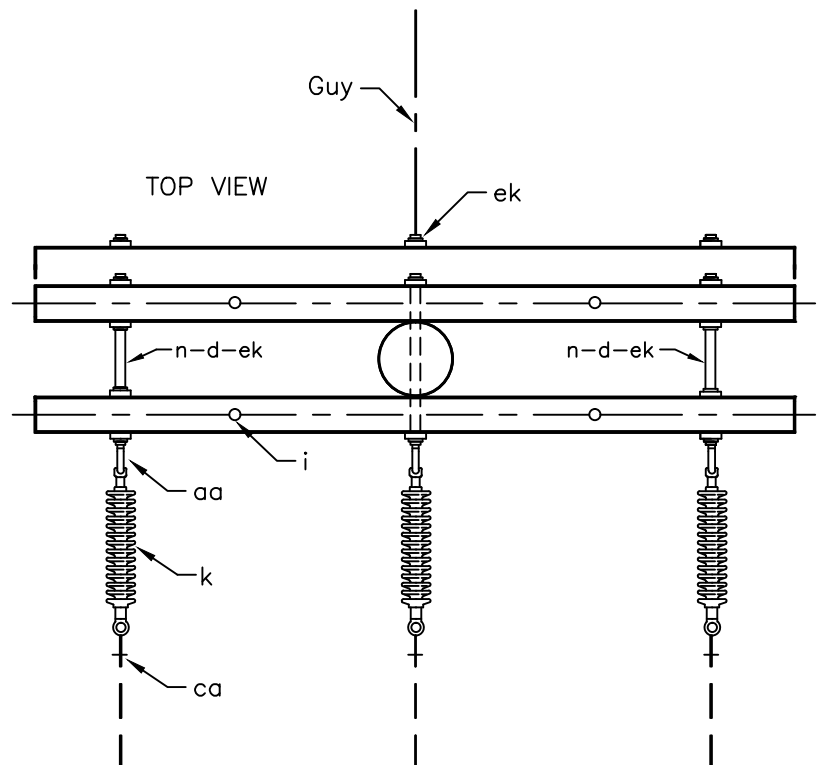
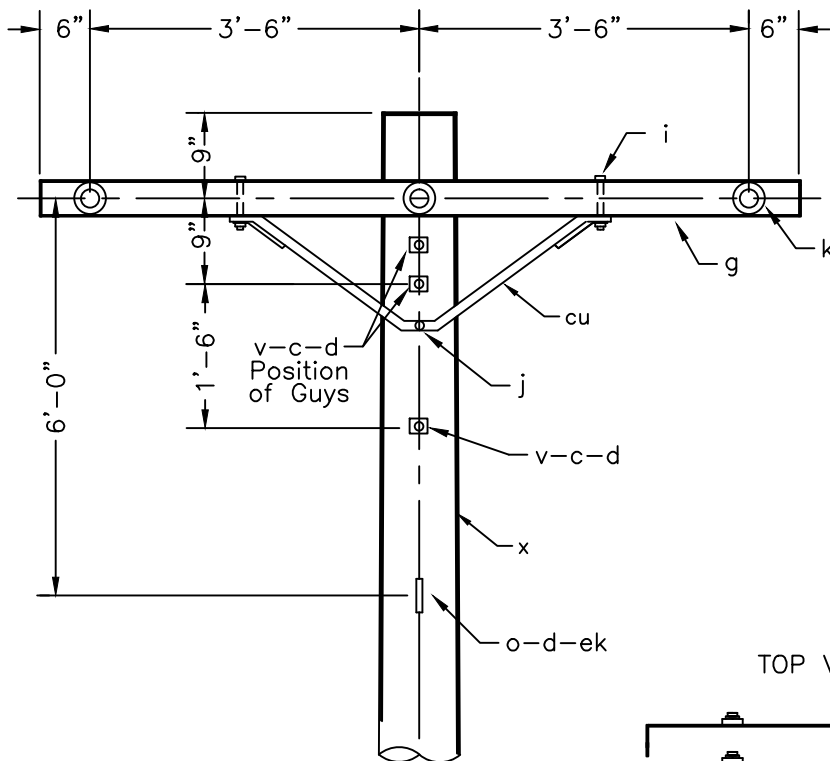
TOP VIEW

NOTE:
FOR GUY ATTACHMENT DETAIL SEE "E3"

ITEM	NO.	MATERIAL
m	1	12" Fiberglass rod
x	1	Roof cut Pole, height as req'd
c	3	Bolt, machine, 5/8" x req'd length
d	7	Washer, square, 5/8"
k	3	Insulator, Epoxilator Susp., 25KV OR 35KV
o	4	Bolt, Oval eye, 5/8" x req'd length
v	3	Guy attachment
ca	4	Dead-end shoe, manual
ek	7	Locknuts, as req'd

15KV, 25KV & 35KV 3-PHASE VERTICAL CONSTRUCTION SINGLE DEADEND	
VIRGIN ISLANDS WATER AND POWER AUTHORITY LINE DEPARTMENT	
Drawn By: <u>C. Grant</u> Approved By: <u>M.SMITH</u>	Date: <u>June 1997</u> Sheet: _____
Dwg. Name: C5	

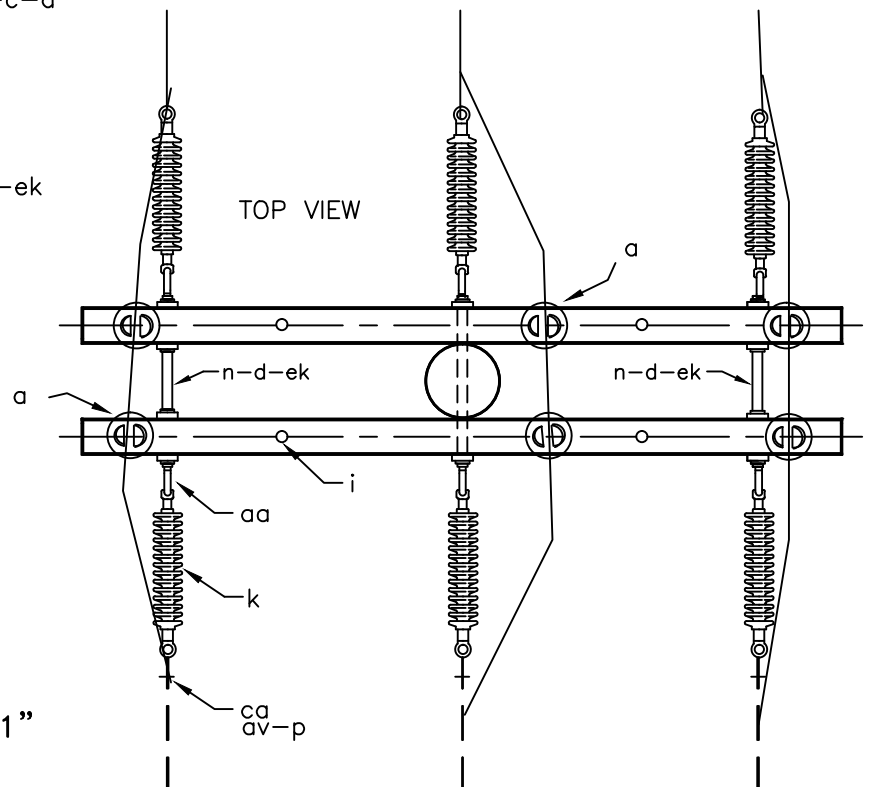
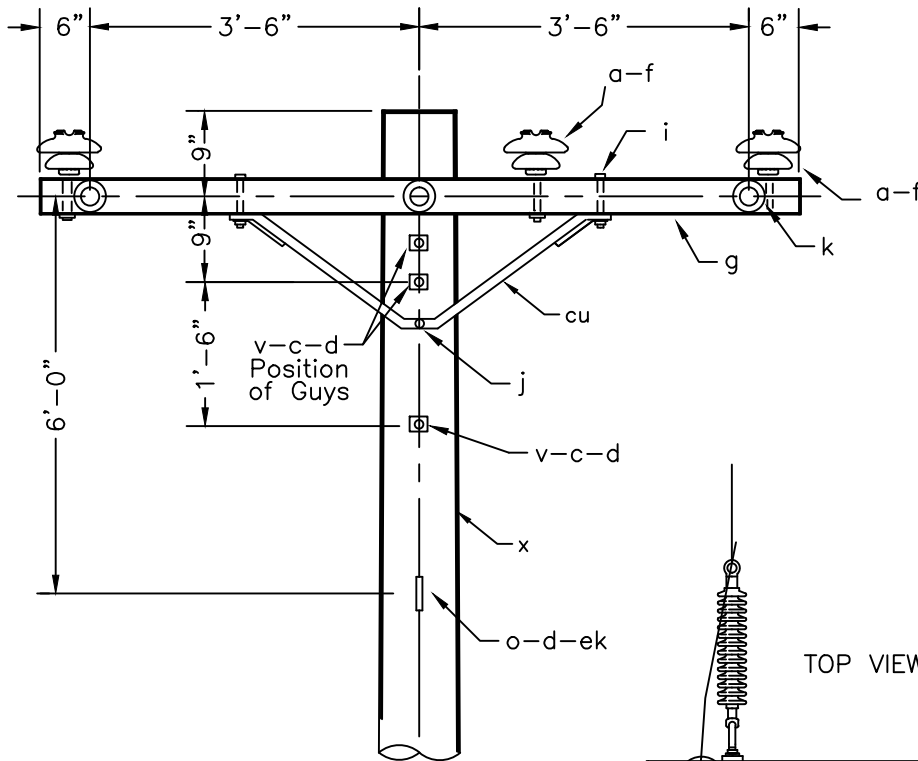
REVISIONS	DATE
BY: XAVIER A. ACEVEDO	8-9-11



NOTE:
FOR GUY ATTACHMENT DETAIL SEE "E1"

ITEM	NO.	MATERIAL	ITEM	NO.	MATERIAL
x	1	Pole, as req'd	cc	1	Deadend assembly, neutral
c	2	Bolt, machine, 5/8" x req'd length	cu	2	Brace, Double Span, 60"
d	13	Washer, square, 5/8"	ek		Locknuts, as req'd
g	3	Crossarm, 3 5/8" x 4 5/8" x 8'-0"	15KV, 25KV & 35KV 3-PHASE CROSSARM CONSTRUCTION DEADEND (SINGLE)		
i	4	Bolt, carriage, 1/2" x 6"			
j	2	Screw, lag, 1/2" X 5"			
k	3	Insulator, Epoxilator Susp., 25KV OR 35KV			
n	3	Bolt, double arming, 5/8" x req'd length	VIRGIN ISLANDS WATER AND POWER AUTHORITY LINE DEPARTMENT		
o	1	Bolt, Oval eye, 5/8" x req'd length			
v	2	Guy attachment	Drawn By: <u>C. Grant</u> Date: <u>June 1997</u> Approved By: _____ Sheet: _____		Dwg. Name: C7
aa	3	Nut, eye, 5/8"			
ca	3	Deadend assembly, primary			

REVISIONS	DATE
BY: XAVIER A. ACEVEDO	8-9-11



NOTE:
FOR GUY ATTACHMENT DETAIL SEE "E1"

ITEM NO.	MATERIAL	ITEM NO.	MATERIAL
a 6	Pin type insulators 25KV	p 8	connectors as require
f 6	Cross arm pins 1 5/8"	av	jumpers as require
x 1	Pole, as req'd	cc 1	Deadend assembly, neutral
c 2	Bolt, machine, 5/8" x req'd length	cu 2	Brace, Double Span, 60"
d 13	Washer, square, 5/8"	ek	Locknuts, as req'd
g 2	Crossarm, 3 5/8" x 4 5/8" x 8'-0"	<p align="center">15KV & 25KV 3-PHASE CROSSARM CONSTRUCTION</p>	
i 4	Bolt, carriage, 1/2" x 6"		
j 2	Screw, lag, 1/2" X 5"	<p align="center">VIRGIN ISLANDS WATER AND POWER AUTHORITY LINE DEPARTMENT</p>	
k 6	Insulator, Epoxilator Susp., 25KV		
n 3	Bolt, double arming, 5/8" x req'd length	<p>Drawn By: <u>C. Grant</u> Date: <u>June 1997</u></p>	
o 1	Bolt, Oval eye, 5/8" x req'd length		
v 2	Guy attachment	<p>Approved By: _____ Sheet: _____</p>	
aa 7	Nut, eye, 5/8"		
ca 6	Deadend assembly, primary	<p align="right">Dwg. Name: C-8</p>	